



School Data

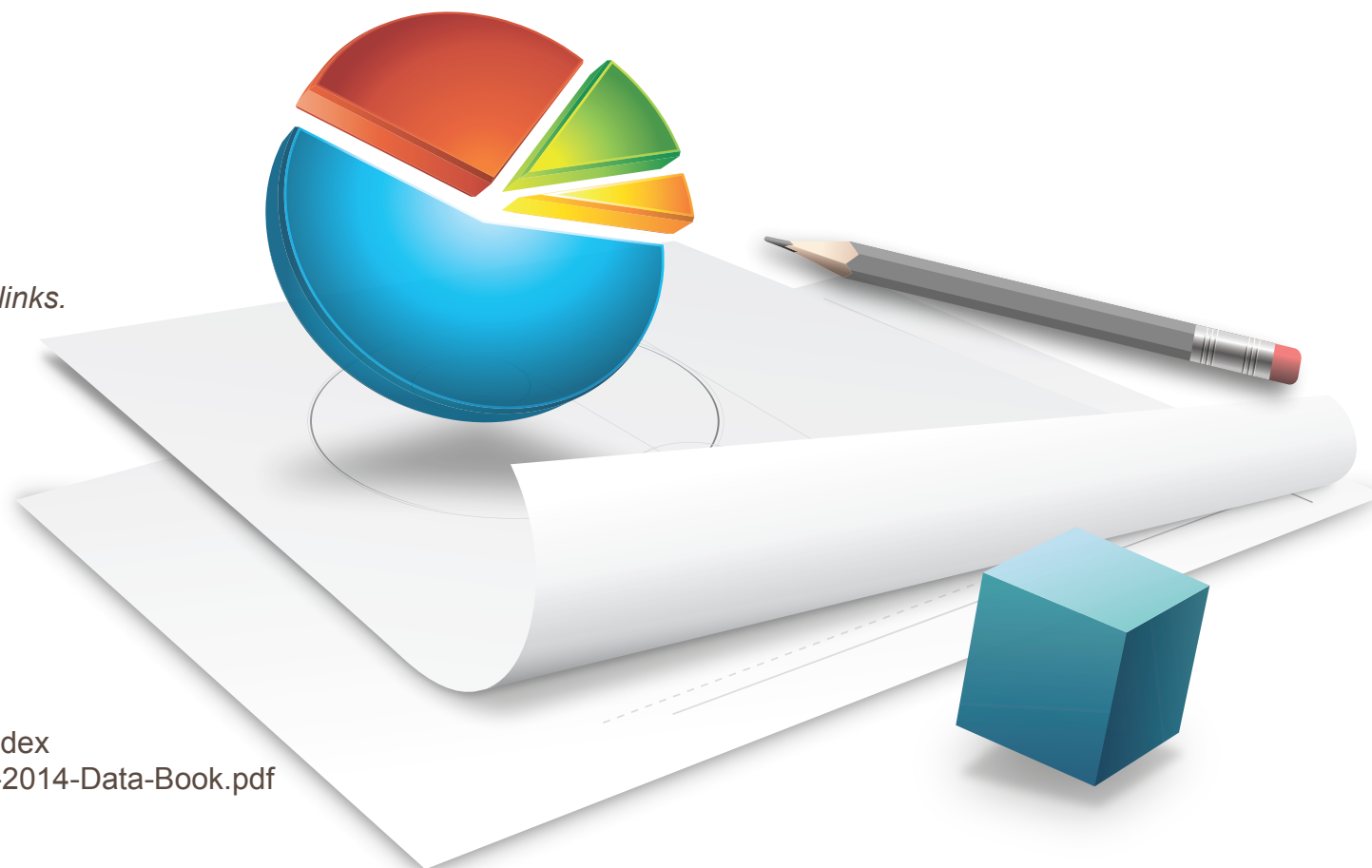
2013-2014

Online School Data



Additional data not presented in this book can be found online at the following links.

Technology Survey:	http://www.ocsw.org/ts
Instructional Materials:	http://www.ocsw.org/im
Assessment Search:	http://www.ocsw.org/as
Longitudinal Data:	http://www.ocsw.org/ltd
Employee Database (CSED):	http://www.ocsw.org/csed
Calendar:	http://www.ocsw.org/calendar
Data Annual Reports:	http://www.ocsw.org/apps/ncea
Iowa/ITBS Annual Test Data:	http://www.ocsw.org/assessment
ISL - Accreditation:	http://www.ocsw.org/school-data/ISL
School Achievement:	http://www.ocsw.org/apps/achievement/index
This book in PDF format:	http://www.ocsw.org/files/uploads/1/2013-2014-Data-Book.pdf





October 2013

Dear School Leadership,

The 2013-2014 School Data Book (paper version) has been compiled to present a **snapshot summary of core census and budget data** of the PreK-12 Catholic schools of the Archdiocese of Seattle. These self-reported statistics from each school community are valued and helpful for planning purposes. Confidential individual salary information for the principal, president, development director, and secretary is not included for full distribution in this publication.

Pastors and principals may request in writing a confidential datasheet that will show the specific salary information for their respective region only. Requests should be directed to the Superintendent of Catholic Schools. Since it is self-reported data, this confidential information should be used only as a guide to planning.

The **electronic** version of the 2013-2014 School Data Report is where the **complete** dynamic and interactive Annual School Data report and longitudinal data is available for study. Printing and PDF capabilities are available. Principals/School Pastors have a private password on **OCSww.org** to study the comprehensive 2013-2014 data collection that includes testing and assessment information, salary averages, instructional materials, and technology trends that are being implemented in our 74 schools. We hope this body of information will provide each reader with robust information about our Catholic schools.

Sincerely,
(Rev.) Stephen C. Rowan, Ph.D.
Superintendent of Catholic Schools

Arch/Diocese: Archdiocese of Seattle Person Reporting: Sandra Barton Smith Title: Assistant Superintendent
 State: Washington Phone: 206-382-4861 Fax: 206-654-4651 E-mail: OCs@Seattlearch.org

A. School Descriptives

Enter the number of schools in each block:

B. Student Descriptives and Total Enrollment

(include Pre-K if students are part of the school and not a separate parish daycare)



National Catholic
Educational Association

ELEMENTARY AND MIDDLE SCHOOL

Totals of B1 and B2 must agree.

A.1a. and b. Location and Sponsorship	Single Parish	Interparish	Diocesan	Religious Congregation or Private	Total
Urban	19	4	4	2	29
Inner City	4	-	-	-	4
Suburban	14	4	3	3	24
Rural	2	4	-	-	6
Total	39	12	7	5	63

B1(a). Student Ethnicity and Religion

	Catholic	Non-Catholic	Total
Hispanic	1,253	165	1,358
Non-Hispanic	11,727	3,053	14,780
TOTAL	12,980	3,158	16,138 *

A2. Gender (# schools)

Male	-
Female	1
Coed	62
Total	63

B1(b). Student Race and Religion

(Students should be counted in the category of which they are most characteristic.)

	Catholic	Non-Catholic	Total
American Indian/ Native Alaskan	53	27	80
Asian	1,652	297	1,949
Black	355	366	721
Native Hawaiian/ Pacific Islander	256	31	287
White	8,534	1,871	10,409
Two or more races	2,127	565	2,692
TOTAL	12,981	3,157	16,138*

*Totals for B1(b) and B1(a) must be the same total as B2 elementary column.

SECONDARY SCHOOL

A.1a. and b. Location and Sponsorship	Single Parish	Interparish	Diocesan	Religious Congregation or Private	Total
Urban			2	3	5
Inner City			2	-	2
Suburban		1	1	2	4
Rural			-	-	-
Total		1	5	5	11

B1(a). Student Ethnicity and Religion

	Catholic	Non-Catholic	Total
Hispanic	317	45	362
Non-Hispanic	3,735	2,140	5,875
TOTAL	4,052	2,185	6,237 *

A2. Gender (# schools)

Male	1
Female	2
Coed	8
Total	11

B1(b). Student Race and Religion

(Students should be counted in the category of which they are most characteristic.)

	Catholic	Non-Catholic	Total
American Indian/ Native Alaskan	33	14	47
Asian	392	340	732
Black	119	215	334
Native Hawaiian/ Pacific Islander	157	41	198
White	2,917	1,094	4,011
Two or more races	34	481	915
TOTAL	4,052	2,185	6,237*

*Totals for B1(b) and B1(a) must be the same as total as the B2 secondary column.

B2. Enrollment by Grade Level

Enter grade level totals according to the type of school. If an elementary school has a ninth grade, put the student count in the ninth grade box in the elementary column; if a secondary has grades below ninth, those numbers go in the secondary column.

	Elementary	Secondary
Prekindergarten	1,458	
Kindergarten	1,617	
First	1,569	
Second	1,547	
Third	1,593	
Fourth	1,616	
Fifth	1,614	
Sixth	1,748	
Seventh	1,715	
Eighth	1,661	
Ninth		1,671
Tenth		1,640
Eleventh		1,490
Twelfth		1,436
Ungraded		
TOTAL	16,138 *	6,237 *

*B2 elementary total must equal B1 elementary total;
B2 secondary total must equal B1 secondary total.

Before completing the information, please refer to the instruction/definition sheet that accompanies this form.

If you have any questions, contact Sr. Dale McDonald at mcdonald@ncea.org or phone: 571.257.0010 or fax: 703.243.0025.

Superintendent's approval: _____

(Signature)

10/15/13

C. Professional Staff

Include all **paid professionals** (administrators and faculty) who have responsibility for the teaching/learning process.
Do not include development or admissions directors, teachers' aides or support staff.

C1. Professional Staff Descriptives

List all the full- and part-time professional staff in each category.

C.2 Full and Part-time Staffing: List all full and part-time professionals in the appropriate categories and total them across and down.
Total in C.1 and C.2 must agree with each other.

ELEMENTARY AND MIDDLE SCHOOL

C1(b). Professional Staff Race and Religion	Catholic	Non-Catholic	TOTAL	C.2 Professional Staff	C2a. Full-time	C2b. Part-time	C2c. Totals (add C2a & C2b)
American Indian/ Native Alaskan	11	1	12	Female Religious	28	18	46
Asian	26	10	36	Male Religious	5	3	8
Black	6	3	9	Clergy	2	0	2
Native Hawaiian/ Pacific Islander	18	2	20	Lay, Male	187	69	256
White	1,107	154	1,261	Lay, Female	900	251	1,151
Two or more races	91	34	125	TOTAL	1,122	341	1,463 *
TOTAL	1,259	204	1,463 *	*These three numbers must be the same.			

C1(a). Faculty Ethnicity and Religion			
	Catholic	Non-Catholic	Total
Hispanic	64	42	106
Non-Hispanic	1,195	162	1,357
TOTAL	1,259	204	1,463 *

SECONDARY SCHOOL

C1(b). Professional Staff Race and Religion	Catholic	Non-Catholic	TOTAL	C.2 Professional Staff	C2a. Full-time	C2b. Part-time	C2c. Totals (add C2a & C2b)
American Indian/ Native Alaskan	0	0	0	Female Religious	5	1	6
Asian	16	12	28	Male Religious	4	1	5
Black	11	9	20	Clergy	3	4	7
Native Hawaiian/ Pacific Islander	9	0	9	Lay, Male	240	30	270
White	401	156	557	Lay, Female	304	49	353
Two or more races	21	6	27	TOTAL	556	85	641 *
TOTAL	458	183	641 *	*These three numbers must be the same.			

C1(a). Faculty Ethnicity and Religion			
	Catholic	Non-Catholic	Total
Hispanic	21	4	25
Non-Hispanic	437	179	616
TOTAL	458	183	641 *

D. Government Funded Programs

1a. The number of schools that have students who receive Title 1 Services	40
1b. Total number of students who receive Title 1 services	749
2a. Number of schools that offer federal nutrition programs ...	17
2b. Number of students who receive free or reduced price breakfast.....	113
2c. Number of students who receive free/reduced price lunch	483
3A. Number of schools that have students receiving subsidized transportation services (state or local)	4
3b. Number of students who receive subsidized transportation	8
4a. Number of schools that received E-rate discounts during the last school year.....	10
4b. Number of schools that applied for the E-rate this school year	9

E. Additional Information

	ELE	SEC
1. Number of new schools that opened this school year	1	0
2. Number of schools that closed, consolidated or merged at the end of last year.....	0	0
3. Number of schools with a board, commission or council	74	
4. Number of schools with a waiting list for any grade.....	47	
5. Number of schools that provide students with access to Internet.....	74	
6. Number of schools with an extended day program	62	

F. Diocesan Education Office Information

- Is there a designated person with these or equivalent titles?

	Yes Lay	Yes Religious	No
a. Vicar for Education			✓
b. Superintendent		✓	
c. Director of Religious Education	✓		
- If any of these positions are held by the same person, circle the appropriate combination:
a & b & c a & b a & c b & c

- Schools Office Personnel

a. Number of associate/assistant superintendents	4.5
b. Number of other professional staff	4
c. Number of support staff	5

Thank you! Please return by **November 1, 2013**

Dale McDonald, P3VM

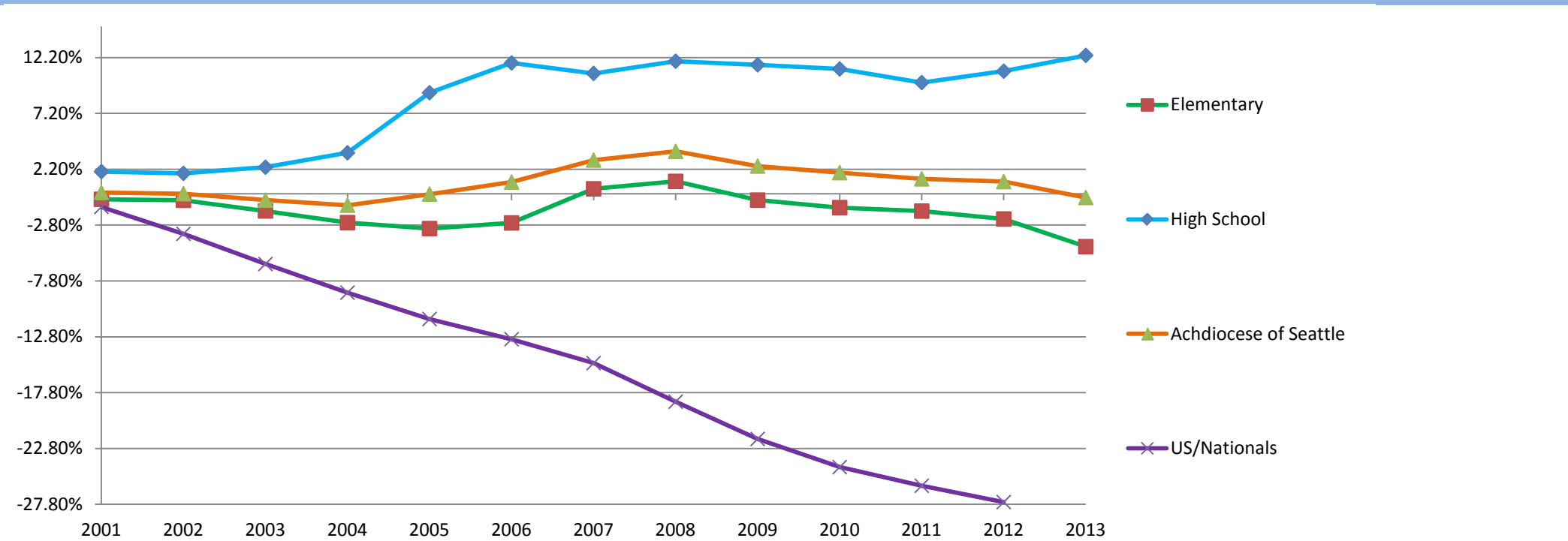
NCEA, 1005 N. Glebe Road, Suite 525, Arlington, VA 22201

Trend Data

Total Enrollment: 2007 - 2013

Region/ Year	2007	2008		2009		2010		2011		2012		2013	
Eastside	2,286	2,597	13.6%	2,498	-3.8%	2,544	1.8%	2,640	3.8%	2,671	1.2%	2581	-3.4%
North Seattle	3,773	3,804	0.8%	3,793	-0.3%	3,849	1.5%	3,880	0.8%	3,816	-1.6%	3783	-0.9%
Northern/Snohomish	2,140	2,086	-2.5%	2,032	-2.6%	1,962	-3.4%	1,915	-2.4%	1,812	-5.4%	1787	-1.4%
Olympic	596	541	-9.2%	540	-0.2%	565	4.6%	561	-0.7%	588	4.8%	601	2.2%
Pierce	2,075	2,095	1.0%	2,018	-3.7%	1,962	-2.8%	1,885	-3.9%	1,883	-0.1%	1801	-4.4%
South King/South Seattle	4,256	4,250	-0.1%	4,188	-1.5%	4,143	-1.1%	4,143	0%	4,149	0.1%	4077	-1.7%
Southern/South Sound	1,879	1,745	-7.1%	1,762	1.0%	1,693	-3.9%	1,642	-3.0%	1,629	-0.8%	1508	-7.4%
Elementary	17,005	17,118	0.7%	16,831	-1.7%	16,718	-0.7%	16,666	-0.3%	16,548	-0.7%	16138	-2.5%
High School	6,139	6,206	1.1%	6,186	-0.3%	6,163	-0.4%	6,088	-1.2%	6,150	1.0%	6237	1.4%
Achdiocese Total	23,144	23,324	0.8%	23,017	-1.3%	22,881	-0.6%	22,754	-0.6%	22,698	-0.2%	22,375	-1.4%

Chart of Percent Change in Total Enrollment 2000 - 2013



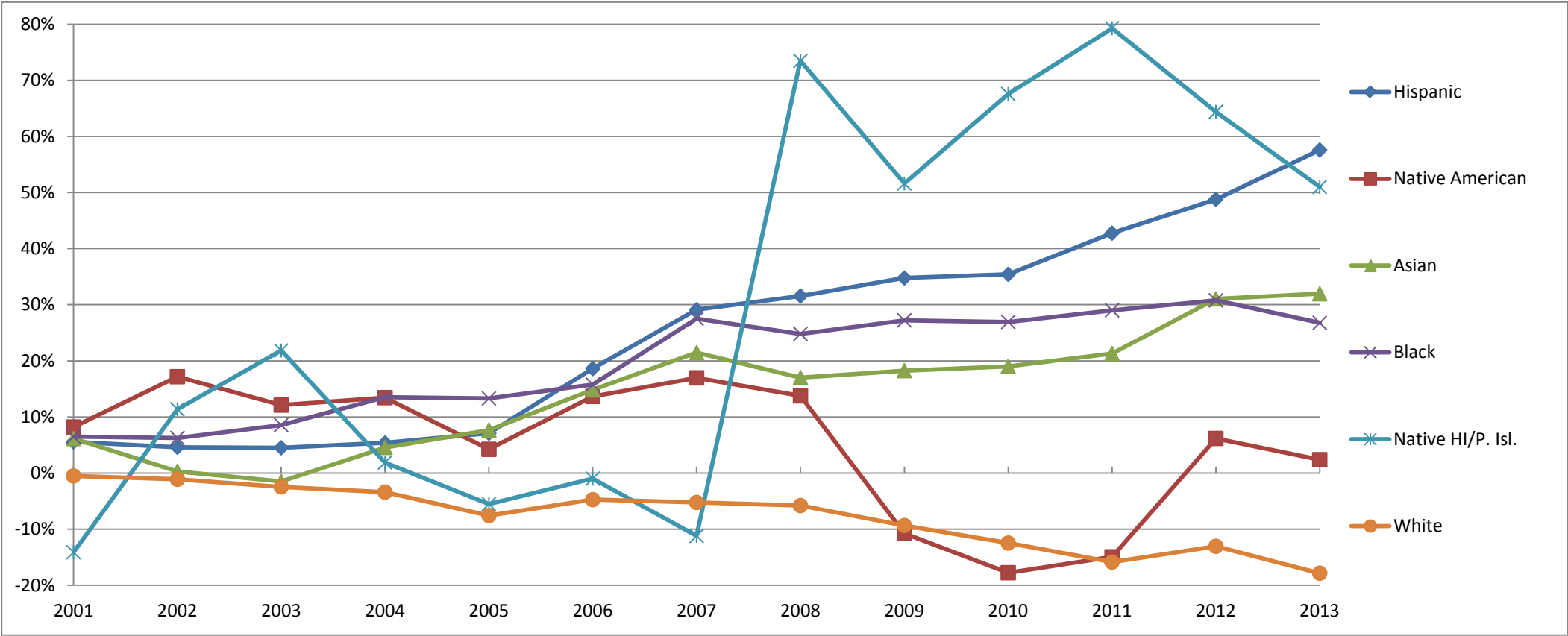
Trend Data

Archdiocese of Seattle Enrollment by Ethnicity and Race: 2007 - 2013

ETHNICITY	2007	2008	%+/-	2009	%+/-	2010	%+/-	2011	%+/-	2012	%+/-	2013	%+/-
Hispanic	1,306	1,338	2.5%	1,381	3.2%	1,390	0.7%	1,492	7.3%	1,582	6.0%	1,721	8.8%

RACE	2007	2008	%+/-	2009	%+/-	2010	%+/-	2011	%+/-	2012	%+/-	2013	%+/-
Native American	156	151	-3.2%	114	-24.5%	106	-7.0%	109	2.8%	132	21.1%	127	-3.8%
Asian	2,428	2,320	-4.4%	2,349	1.3%	2,367	0.8%	2,421	2.3%	2,657	9.7%	2,681	0.9%
Black	1,065	1,036	-2.7%	1,061	2.4%	1,058	-0.3%	1,080	2.1%	1,099	1.8%	1,055	-4.0%
Native HI/P. Isl.	352	650	84.7%	508	-21.8%	589	15.9%	658	11.7%	560	-14.9%	485	-13.4%
White	16,411	16,311	-0.6%	15,741	-3.5%	15,248	-3.1%	14,731	-3.4%	15,146	2.8%	14,420	-4.8%
Multi-racial	2,732	2,856	4.5%	3,244	13.6%	3,513	8.3%	3,755	6.9%	3,104	-17.3%	3,607	16.2%
	24,450	24,662		24,398		24,271		22,754		22,698		22,375	

Chart of Percent Change in Enrollment by Ethnicity and Race 2000 - 2013



Government Funded Programs	All Schools		Eastside		North Seattle		Northern Snohomish		Olympic		Pierce		South King South Seattle		South Sound		High Schools	
The number of schools that have students who receive Title 1 Services	40	54.1%	2	22.2%	5	38.5%	7	87.5%	3	75.0%	4	66.7%	13	86.7%	5	62.5%	1	9%
Total number of students who receive Title I services	749	3.3%	4	0.2%	36	1.0%	113	6.3%	43	7.2%	51	2.8%	397	9.7%	65	4.3%	40	1%
Number of schools that offer federal nutrition programs	16	21.6%		0.0%	1	7.7%	1	12.5%	1	25.0%	4	66.7%	3	20.0%	5	62.5%	1	9.1%
Number of students who receive free or reduced-price breakfast	113	1%		0%		0%		0%		0%	113	6%		0%		0%		0%
Number of students who receive free or reduced-price lunch	467	2.1%		0.0%	6	0.2%	28	1.6%	19	3.2%	209	11.6%	77	1.9%	88	5.8%	40	0.6%
Number of schools that have students receiving subsidized transportation services (state or local)	4	5.4%		0.0%		0%	1	13%		0%		0%	1	7%	2	25.0%		0.0%
Number of students who receive subsidized transportation services (busing, travel passes, compensation to parents, etc.)	71	0.3%		0.0%		0%	28	2%		0%		0%	-	0%	43	2.9%		0.0%
Number of schools that received E-rate discounts during the last school year	10	13.5%		0%	2	15.4%	1	12.5%		0%	1	17%	1	6.7%	1	12.5%	4	36.4%
Number of schools that applied for the E-rate this school year	9	12.2%		0%	3	23.1%	1	12.5%		0%	1	17%	1	6.7%	1	12.5%	2	18.2%

Additional Information

Number of schools with a Board, Commission or Council	74	100%	9	100%	13	100%	8	100%	4	100%	6	100%	15	100%	8	100%	11	100%
Number of schools with a waiting list for any grade	47	64%	9	100%	10	77%	2	25%	1	25%	3	50%	11	73%	5	63%	6	55%
Number of schools that provide students with access to the Internet	74	100%	9	100%	13	100%	8	100%	4	100%	6	100%	15	100%	8	100%	11	100%
Number of schools with an Extended Day Program	62	84%	9	100%	11	85%	8	100%	4	100%	6	100%	15	100%	7	88%	2	18%

Eastside Region

SCHOOLS LOCATION	Holy Fam. Kirkland	Sac. Heart Bellevue	St. Brendan Bothell	St. Joseph Issaquah	St. Louise Bellevue	St. Mad. Sop. Bellevue	St. Mon. Mercer Is.	REGION TOTAL
Total enrollment	252	414	254	345	463	191	199	2,118
Pre-school enrollment	-	16	25	65	18	6	20	150
K-12 enrollment	252	398	229	280	445	185	179	1,968
Number of Catholics	247	379	239	299	452	156	186	1,958
Catholics %	98%	92%	94%	87%	98%	82%	93%	92%
Number of non-Catholics	5	35	15	46	11	35	13	160
Non-Catholic %	2%	8%	6%	13%	2%	18%	7%	8%
Number of minorities (non-white)	71	101	73	66	172	86	26	595
Minorities %	28%	24%	29%	19%	37%	45%	13%	28%
Hispanic enrollment	4	28	33	20	50	19	10	164
Hispanic %	2%	7%	13%	6%	11%	10%	5%	8%
Endowment	750,000	742,999	805,959	-	1,700,000	-	823,000	4,821,958
Number of local scholarships	-	27	26	46	40	114	20	273
Amount of local scholarships	-	114,916	43,000	50,000	95,000	669,571	66,010	1,038,497
Total budget \$	1,919,800	4,069,731	1,629,080	2,520,929	3,260,031	1,553,100	1,711,402	16,664,073
Tuition/fees	1,529,000	2,977,331	1,276,580	2,036,394	2,310,486	1,213,500	1,091,680	12,434,971
Tuition %	80%	73%	78%	81%	71%	78%	64%	75%
Parish	37,800	350,000	205,000	115,735	235,000	87,000	225,000	1,255,535
Parish (indirect)	-	-	-	-	220,000	-	-	220,000
Parish % of school budget	2%	9%	13%	5%	14%	6%	13%	9%
Neighboring parish/es	-	-	22,000	68,800	24,386	1,000	-	116,186
Neighboring parish % of school budget	-	-	1%	3%	1%	0%	-	1%
Fundraising	164,500	275,000	100,500	125,000	200,000	140,000	353,183	1,358,183
Fundraising %	9%	7%	6%	5%	6%	9%	21%	8%
Development	185,500	225,000	25,000	120,000	194,159	110,000	41,539	901,198
Development %	10%	6%	2%	5%	6%	7%	2%	5%
Other	3,000	242,400	-	55,000	76,000	1,600	-	378,000
Other %	0%	6%	-	2%	2%	0%	-	2%
Per pupil cost	7,618	9,830	6,414	7,307	7,041	8,131	8,600	7,868
Tuition-1 Catholic student	6,391	10,320	5,022	6,551	5,352	7,990	6,250	6,839
Tuition-1 out-of-parish student	9,889	10,320	7,862	8,041	8,604	8,990	9,850	9,079
Tuition-1 Catholic (Pre-K)	-	-	6,556	3,500	-	-	-	5,028
Tuition-1 out-of-parish (Pre-K)	-	-	-	3,500	-	-	-	3,500

North Seattle Region

SCHOOLS LOCATION	Assu/St.B Seattle	Chr. King Seattle	OL Fatima Seattle	OL Lake Seattle	St. Al Seattle	St. Anne Seattle	St. Ben. Seattle	St. Cath. Seattle	St. John Seattle	St. Luke Seattle	St. Mark Seattle	St. Matt Seattle	REGION TOTAL
Total enrollment	501	215	246	281	224	258	207	239	546	300	181	200	3,398
Pre-school enrollment	-	43	-	59	37	20	41	35	60	17	19	10	341
K-12 enrollment	501	172	246	222	187	238	166	204	486	283	162	190	3,057
Number of Catholics	468	144	216	200	169	242	131	130	452	245	145	177	2,719
Catholics %	93%	67%	88%	71%	75%	94%	63%	54%	83%	82%	80%	89%	80%
Number of non-Catholics	33	71	30	81	55	16	76	109	94	55	36	23	679
Non-Catholic %	7%	33%	12%	29%	25%	6%	37%	46%	17%	18%	20%	12%	20%
Number of minorities (non-white)	39	84	34	64	46	59	58	127	127	99	125	123	985
Minorities %	8%	39%	14%	23%	21%	23%	28%	53%	23%	33%	69%	62%	29%
Hispanic enrollment	5	28	2	16	8	6	7	1	50	4	10	17	154
Hispanic %	1%	13%	1%	6%	4%	2%	3%	0%	9%	1%	6%	9%	5%
Endowment	402,968	68,628	2,062,854	560,000	-	1,086,043	510,549	-	586,447	630,000	26,000	950,000	6,883,489
Number of local scholarships	53	49	52	21	23	20	-	-	123	59	26	15	441
Amount of local scholarships	158,492	127,397	120,000	75,000	81,942	-	20,000	32,000	297,388	66,000	-	33,000	1,011,219
Total budget \$	3,900,832	1,684,351	1,915,565	2,070,300	1,209,002	2,032,627	1,664,874	1,831,337	3,774,452	2,100,600	845,504	1,464,000	24,493,444
Tuition/fees	2,882,051	1,343,627	1,615,565	1,472,300	939,002	1,653,000	1,441,712	1,451,223	3,028,390	1,645,000	440,504	989,000	18,901,374
Tuition %	74%	80%	84%	71%	78%	81%	87%	79%	80%	78%	52%	68%	77%
Parish	277,038	105,000	100,000	108,000	75,000	50,000	-	128,000	-	250,000	153,000	180,000	1,426,038
Parish (indirect)	-	70,224	-	-	-	-	-	-	126,504	-	-	-	196,728
Parish % of school budget	7%	10%	5%	5%	6%	2%	-	7%	3%	12%	18%	12%	7%
Neighboring parish/es	1,000	-	-	14,500	-	-	-	-	-	-	-	-	15,500
Neighboring parish % of school budget	0%	-	-	1%	-	-	-	-	-	-	-	-	0%
Fundraising	321,134	101,500	150,000	115,000	125,000	175,000	124,112	170,354	338,500	104,000	90,000	90,000	1,904,600
Fundraising %	8%	6%	8%	6%	10%	9%	7%	9%	9%	5%	11%	6%	8%
Development	277,038	60,000	50,000	60,000	30,000	135,577	35,000	50,000	258,000	93,000	67,000	80,000	1,195,615
Development %	7%	4%	3%	3%	2%	7%	2%	3%	7%	4%	8%	5%	5%
Other	142,571	4,000	-	300,500	40,000	19,050	64,050	31,760	23,058	8,600	95,000	125,000	853,589
Other %	4%	0%	-	15%	3%	1%	4%	2%	1%	0%	11%	9%	3%
Per pupil cost	7,786	7,834	7,787	7,368	5,397	7,878	8,043	7,662	6,913	7,002	4,671	7,320	7,208
Tuition-1 Catholic student	5,884	5,566	6,022	5,920	5,600	6,800	5,279	5,532	7,987	5,460	6,300	4,950	5,942
Tuition-1 out-of-parish student	9,072	7,937	9,335	8,440	8,000	8,685	6,985	7,956	7,987	8,420	6,300	6,720	7,986
Tuition-1 Catholic (Pre-K)	-	-	-	5,815	-	5,440	-	5,040	4,168	4,000	-	-	4,893
Tuition-1 out-of-parish (Pre-K)	-	-	-	6,275	-	5,440	-	5,520	4,168	4,400	-	-	5,161

Northern/Snohomish Region

SCHOOLS LOCATION	Assumption Bellingham	Holy Rosary Edmonds	Imm. Conc. Mt. Vernon	IC/OLPH Everett	St. Mary Mag. Everett	St. Michael Snohomish	St. Pius X Mtlk Terrace	St. T. More Lynnwood	REGION TOTAL
Total enrollment	215	248	219	256	373	94	120	262	1,787
Pre-school enrollment	26	19	28	31	50	31	12	34	231
K-12 enrollment	189	229	191	225	323	63	108	228	1,556
Number of Catholics	172	210	173	223	325	80	114	243	1,540
Catholics %	80%	85%	79%	87%	87%	85%	95%	93%	86%
Number of non-Catholics	43	38	46	33	48	14	6	19	247
Non-Catholic %	20%	15%	21%	13%	13%	15%	5%	7%	14%
Number of minorities (non-white)	107	52	60	69	185	17	44	145	679
Minorities %	50%	21%	27%	27%	50%	18%	37%	55%	38%
Hispanic enrollment	38	12	31	32	17	22	35	16	203
Hispanic %	18%	5%	14%	13%	5%	23%	29%	6%	11%
Endowment	281,666	350,798	2,218,058	397,901	-	-	712,000	-	3,960,423
Number of local scholarships	58	23	48	17	-	-	31	-	177
Amount of local scholarships	120,000	63,424	47,764	76,181	25,000	-	33,763	-	366,132
Total budget \$	1,542,901	1,877,368	1,351,880	1,635,730	2,383,900	409,154	659,200	1,619,070	11,479,203
Tuition/fees	901,206	1,293,168	826,985	1,128,032	1,800,500	237,154	418,000	1,219,514	7,824,559
Tuition %	58%	69%	61%	69%	76%	58%	63%	75%	68%
Parish	100,000	250,000	150,800	199,448	220,000	30,000	110,000	205,739	1,265,987
Parish (indirect)	123,260	-	-	65,000	-	50,000	-	-	238,260
Parish % of school budget	14%	13%	11%	16%	9%	20%	17%	13%	13%
Neighboring parish/es	50,000	-	-	1,250	56,400	2,600	4,200	1,790	116,240
Neighboring parish % of school budget	3%	-	-	0%	2%	1%	1%	0%	1%
Fundraising	175,699	330,100	129,800	122,500	232,000	55,000	82,000	185,367	1,312,466
Fundraising %	11%	18%	10%	7%	10%	13%	12%	11%	11%
Development	156,207	2,000	4,220	99,500	33,000	34,400	45,000	-	374,327
Development %	10%	0%	0%	6%	1%	8%	7%	-	3%
Other	36,529	2,100	240,075	20,000	42,000	-	-	6,660	347,364
Other %	2%	0%	18%	1%	2%	-	-	0%	3%
Per pupil cost	7,176	7,570	6,173	6,390	6,391	4,353	5,493	6,180	6,424
Tuition-1 Catholic student	4,973	5,612	3,950	4,932	5,791	4,987	4,600	5,000	4,981
Tuition-1 out-of-parish student	6,542	9,508	5,670	7,191	7,275	4,987	7,000	6,320	6,812
Tuition-1 Catholic (Pre-K)	-	-	-	3,360	-	-	-	-	3,360
Tuition-1 out-of-parish (Pre-K)	-	-	-	-	-	-	-	-	FALSE

Olympic Region

Summary of Budget and Enrollment

SCHOOLS LOCATION	Star of Sea Bremerton	Queen of Angels Pt. Angeles	St. Cecilia Bainbridge Is.	St. Nicholas Gig Harbor	REGION TOTAL
Total enrollment	170	147	103	181	601
Pre-school enrollment	-	18	21	30	69
K-12 enrollment	170	129	82	151	532
Number of Catholics	163	120	81	167	531
Catholics %	96%	82%	79%	92%	88%
Number of non-Catholics	7	27	22	14	70
Non-Catholic %	4%	18%	21%	8%	12%
Number of minorities (non-white)	63	29	39	36	167
Minorities %	37%	20%	38%	20%	28%
Hispanic enrollment	14	22	23	18	77
Hispanic %	8%	15%	22%	10%	13%
Endowment	800,000	745,168	-	167,000	1,712,168
Number of local scholarships	-	42	29	20	91
Amount of local scholarships	-	79,715	85,245	15,000	179,960
Total budget \$	974,000	805,875	667,500	1,038,833	3,486,208
Tuition/fees	561,500	461,775	375,000	681,833	2,080,108
Tuition %	58%	57%	56%	66%	60%
Parish	200,000	165,000	60,000	50,000	475,000
Parish (indirect)	-	-	15,000	137,000	152,000
Parish % of school budget	21%	20%	11%	18%	18%
Neighboring parish/es	7,500	52,500	-	-	60,000
Neighboring parish % of school budget	1%	7%	-	-	2%
Fundraising	92,000	62,500	70,000	123,000	347,500
Fundraising %	9%	8%	10%	12%	10%
Development	30,000	30,100	110,000	40,000	210,100
Development %	3%	4%	16%	4%	6%
Other	83,000	34,000	37,500	7,000	161,500
Other %	9%	4%	6%	1%	5%
Per pupil cost	5,729	5,482	6,481	5,739	5,801
Tuition-1 Catholic student	4,365	3,515	5,550	4,600	4,508
Tuition-1 out-of-parish student	5,400	4,750	5,925	6,400	5,619
Tuition-1 Catholic (Pre-K)	-	-	3,350	-	3,350
Tuition-1 out-of-parish (Pre-K)	-	-	3,450	-	3,450

2013 Data. Printed: 10/21/2013

Pierce Region

SCHOOLS LOCATION	All Saints Puyallup	Holy Rosary Tacoma	St. Charles B. Tacoma	St. Frances C. Tacoma	St. Patrick Tacoma	Visitation Tacoma	REGION TOTAL
Total enrollment	380	165	517	223	389	127	1,801
Pre-school enrollment	48	27	34	16	56	16	197
K-12 enrollment	332	138	483	207	333	111	1,604
Number of Catholics	238	98	378	123	324	102	1,263
Catholics %	63%	59%	73%	55%	83%	80%	70%
Number of non-Catholics	142	67	139	100	65	25	538
Non-Catholic %	37%	41%	27%	45%	17%	20%	30%
Number of minorities (non-white)	144	123	154	118	65	82	686
Minorities %	38%	75%	30%	53%	17%	65%	38%
Hispanic enrollment	38	68	36	29	28	23	222
Hispanic %	10%	41%	7%	13%	7%	18%	12%
Endowment	1,183,000	1,250,000	3,025,000	900,000	1,181,961	204,117	7,744,078
Number of local scholarships	94	8	82	92	75	-	351
Amount of local scholarships	177,064	32,000	120,000	138,710	85,800	-	553,574
Total budget \$	2,483,988	952,000	3,145,208	1,366,720	2,386,036	761,469	11,095,421
Tuition/fees	1,864,852	515,000	2,332,457	991,000	1,865,611	385,632	7,954,552
Tuition %	75%	54%	74%	73%	78%	51%	72%
Parish	122,500	4,000	400,000	75,500	180,125	56,000	838,125
Parish (indirect)	-	20,000	-	-	-	-	20,000
Parish % of school budget	5%	3%	13%	6%	8%	7%	8%
Neighboring parish/es	1,000	3,000	-	4,750	9,500	2,400	20,650
Neighboring parish % of school budget	0%	0%	-	0%	0%	0%	0%
Fundraising	410,800	95,000	106,000	102,000	177,200	58,000	949,000
Fundraising %	17%	10%	3%	7%	7%	8%	9%
Development	2,237	60,000	306,751	60,000	143,600	110,500	683,088
Development %	0%	6%	10%	4%	6%	15%	6%
Other	82,599	255,000	-	133,470	10,000	148,937	630,006
Other %	3%	27%	-	10%	0%	20%	6%
Per pupil cost	6,537	5,770	6,084	6,129	6,134	5,996	6,161
Tuition-1 Catholic student	4,975	4,950	5,455	4,712	4,900	4,800	4,965
Tuition-1 out-of-parish student	5,575	4,950	6,515	4,712	7,200	5,500	5,742
Tuition-1 Catholic (Pre-K)	-	3,000	-	-	6,200	5,500	4,900
Tuition-1 out-of-parish (Pre-K)	-	3,000	-	-	6,200	-	4,600

South King/South Seattle Region

SCHOOLS LOCATION	Holy Fam. Auburn	Holy Fam. Seattle	Holy Ros. Seattle	OL Guad. Seattle	St. Anth. Renton	St. Bern. Seattle	St. Edw. Seattle	St. Fr. Assi. Seahurst	St. George Seattle	St. Joseph Seattle	St. Paul Seattle	St. Phil. D. Moines	St. Ther. Seattle	St. Vinc. Fed. Way	REGION TOTAL
Total enrollment	183	161	496	262	479	223	143	469	246	607	142	260	139	251	4,061
Pre-school enrollment	19	32	31	30	-	23	15	-	25	-	14	23	8	28	248
K-12 enrollment	164	129	465	232	479	200	128	469	221	607	128	237	131	223	3,813
Number of Catholics	175	151	483	261	462	184	75	399	177	464	96	219	57	238	3,441
Catholics %	96%	94%	97%	100%	96%	83%	52%	85%	72%	76%	68%	84%	41%	95%	85%
Number of non-Catholics	8	10	13	1	17	39	68	70	69	143	46	41	82	13	620
Non-Catholic %	4%	6%	3%	0%	4%	17%	48%	15%	28%	24%	32%	16%	59%	5%	15%
Number of minorities (non-white)	59	148	115	87	299	149	131	121	197	162	130	141	125	143	2,007
Minorities %	32%	92%	23%	33%	62%	67%	92%	26%	80%	27%	92%	54%	90%	57%	49%
Hispanic enrollment	20	72	17	19	46	34	5	-	19	21	2	29	4	21	309
Hispanic %	11%	45%	3%	7%	10%	15%	3%	-	8%	3%	1%	11%	3%	8%	8%
Endowment	163,140	250,000	-	390,000	546,343	525,748	263,715	1,088,000	-	6,366,077	28,000	975,000	95,250	470,000	11,161,273
Number of local scholarships	14	12	-	43	91	12	105	45	-	-	72	78	75	57	604
Amount of local scholarships	12,100	12,000	-	72,672	175,800	9,950	163,447	60,000	120,000	-	62,000	133,816	178,000	100,454	1,100,239
Total budget \$	1,109,800	746,522	3,284,913	1,736,635	3,492,434	1,207,988	918,070	2,590,497	263,299	7,695,374	1,208,688	1,407,415	1,109,600	1,663,719	28,434,954
Tuition/fees	845,000	402,522	2,494,044	1,359,153	2,418,639	995,838	509,450	2,049,207	-	6,026,590	814,164	986,415	651,000	1,177,236	20,729,258
Tuition %	76%	54%	76%	78%	69%	82%	55%	79%	-	78%	67%	70%	59%	71%	73%
Parish	110,000	120,000	286,383	130,000	210,750	52,000	105,000	154,290	45,000	213,000	97,524	145,000	95,000	141,618	1,905,565
Parish (indirect)	-	-	-	-	-	-	40,000	45,000	-	36,000	100,000	-	-	232,790	453,790
Parish % of school budget	10%	16%	9%	7%	6%	4%	16%	8%	17%	3%	16%	10%	9%	23%	8%
Neighboring parish/es	14,800	-	-	-	147,000	-	108,620	-	86,620	9,000	100,000	1,000	100,000	-	567,040
Neighboring parish % of school budget	1%	-	-	-	4%	-	12%	-	33%	0%	8%	0%	9%	-	2%
Fundraising	110,000	125,000	339,500	115,000	255,000	110,000	50,000	220,000	103,896	448,510	55,000	180,000	36,850	112,075	2,260,831
Fundraising %	10%	17%	10%	7%	7%	9%	5%	8%	39%	6%	5%	13%	3%	7%	8%
Development	10,000	28,000	164,986	117,000	182,500	50,150	30,000	3,000	27,783	519,000	35,000	5,000	79,750	-	1,252,169
Development %	1%	4%	5%	7%	5%	4%	3%	0%	11%	7%	3%	0%	7%	-	4%
Other	20,000	71,000	-	15,482	278,545	-	75,000	119,000	-	443,274	7,000	90,000	147,000	-	1,266,301
Other %	2%	10%	-	1%	8%	-	8%	5%	-	6%	1%	6%	13%	-	4%
Per pupil cost	6,064	4,637	6,623	6,628	7,291	5,417	6,420	5,523	1,070	12,678	8,512	5,413	7,983	6,628	7,002
Tuition-1 Catholic student	5,930	4,000	5,256	5,640	7,827	4,224	4,575	4,162	4,630	11,040	4,645	5,085	5,918	4,925	5,561
Tuition-1 out-of-parish student	6,918	5,200	8,125	8,460	7,827	6,370	5,000	6,589	6,070	11,040	6,159	6,145	7,282	6,825	7,001
Tuition-1 Catholic (Pre-K)	4,820	2,200	4,088	2,772	-	-	6,500	-	-	-	4,955	-	4,532	-	4,267
Tuition-1 out-of-parish (Pre-K)	5,930	2,500	4,088	-	-	-	6,500	-	-	-	4,955	-	5,104	-	4,846

Southern Region

SCHOOLS LOCATION	OL Lourdes Vancouver	St. Joseph Chehalis	St. Joseph Vancouver	St. Mary Aberdeen	St. Michael Olympia	St. Rose Longview	REGION TOTAL
Total enrollment	285	147	354	140	254	135	1,315
Pre-school enrollment	43	24	-	30	-	24	121
K-12 enrollment	242	123	354	110	254	111	1,194
Number of Catholics	232	75	296	80	237	114	1,034
Catholics %	81%	51%	84%	57%	93%	84%	79%
Number of non-Catholics	53	72	58	60	17	21	281
Non-Catholic %	19%	49%	16%	43%	7%	16%	21%
Number of minorities (non-white)	90	13	60	21	76	51	311
Minorities %	32%	9%	17%	15%	30%	38%	24%
Hispanic enrollment	32	29	27	55	13	14	170
Hispanic %	11%	20%	8%	39%	5%	10%	13%
Endowment	575,054	25,305	753,887	111,054	2,147,172	737,311	4,349,783
Number of local scholarships	69	9	100	60,000	48	17	60,243
Amount of local scholarships	129,291	59,695	127,074	-	72,000	33,797	421,857
Total budget \$	2,078,451	664,363	4,087,437	837,200	1,856,654	947,351	10,471,456
Tuition/fees	1,501,530	287,570	2,349,027	450,425	1,272,467	558,551	6,419,570
Tuition %	72%	43%	57%	54%	69%	59%	61%
Parish	135,000	72,000	262,000	54,612	403,087	215,000	1,141,699
Parish (indirect)	60,000	57,881	-	26,315	-	-	144,196
Parish % of school budget	9%	20%	6%	10%	22%	23%	12%
Neighboring parish/es	28,309	7,000	38,425	66,748	-	10,000	150,482
Neighboring parish % of school budget	1%	1%	1%	8%	-	1%	1%
Fundraising	161,782	208,450	1,273,700	112,000	1,600	96,500	1,854,032
Fundraising %	8%	31%	31%	13%	0%	10%	18%
Development	163,084	2,400	75,500	115,000	80,000	65,000	500,984
Development %	8%	0%	2%	14%	4%	7%	5%
Other	28,746	29,062	88,785	12,100	99,500	2,300	260,493
Other %	1%	4%	2%	1%	5%	0%	2%
Per pupil cost	7,293	4,519	11,546	5,980	7,310	7,017	7,963
Tuition-1 Catholic student	5,570	3,262	4,816	3,380	5,253	4,023	4,384
Tuition-1 out-of-parish student	6,710	3,837	6,829	4,597	8,188	5,775	5,989
Tuition-1 Catholic (Pre-K)	-	2,310	5,400	-	-	-	3,855
Tuition-1 out-of-parish (Pre-K)	-	2,130	5,400	-	-	-	3,765

Non-Parish Schools

SCHOOLS LOCATION	Eastside Cath. MS Sammamish	Forest Ridge 5-8 Bellevue	Holy Family Lacey	Pacific Crest Camas	Seattle Nativity Seattle	Villa Acad. Seattle	REGION TOTAL
Total enrollment	281	182	95	98	16	385	1,057
Pre-school enrollment	-	-	28	22	-	51	101
K-12 enrollment	281	182	67	76	16	334	956
Number of Catholics	120	56	64	80	4	170	494
Catholics %	43%	31%	67%	82%	25%	44%	47%
Number of non-Catholics	161	126	31	18	12	215	563
Non-Catholic %	57%	69%	33%	18%	75%	56%	53%
Number of minorities (non-white)	57	87	40	19	16	85	304
Minorities %	20%	48%	42%	19%	100%	22%	29%
Hispanic enrollment	15	1	8	10	5	20	59
Hispanic %	5%	1%	8%	10%	31%	5%	6%
Endowment	202,000	-	-	65,985	25,000	1,056,715	1,349,700
Number of local scholarships	84	16	-	1	16	53	170
Amount of local scholarships	-	-	-	3,115	240,000	554,878	797,993
Total budget \$	5,776,595	7,041,249	645,188	799,790	875,275	6,897,467	22,035,564
Tuition/fees	5,337,595	6,043,000	393,166	594,840	275	6,103,765	18,472,641
Tuition %	92%	86%	61%	74%	0%	88%	84%
Parish	-	-	-	-	-	-	-
Parish (indirect)	-	-	-	-	-	-	-
Parish % of school budget	-	-	-	-	-	-	-
Neighboring parish/es	-	-	7,025	43,740	-	-	50,765
Neighboring parish % of school budget	-	-	1%	5%	-	-	0%
Fundraising	60,000	-	91,008	89,500	-	325,000	565,508
Fundraising %	1%	-	14%	11%	-	5%	3%
Development	231,000	345,000	137,989	60,000	875,000	400,000	2,048,989
Development %	4%	5%	21%	8%	100%	6%	9%
Other	148,000	653,249	16,000	11,710	-	68,702	897,661
Other %	3%	9%	2%	1%	-	1%	4%
Per pupil cost	20,557	38,688	6,791	8,161	54,705	17,915	20,847
Tuition-1 Catholic student	18,995	27,600	5,920	6,575	-	16,725	15,163
Tuition-1 out-of-parish student	18,995	27,600	5,920	6,575	-	16,725	15,163
Tuition-1 Catholic (Pre-K)	-	-	-	4,595	-	-	4,595
Tuition-1 out-of-parish (Pre-K)	-	-	-	-	-	12,480	12,480

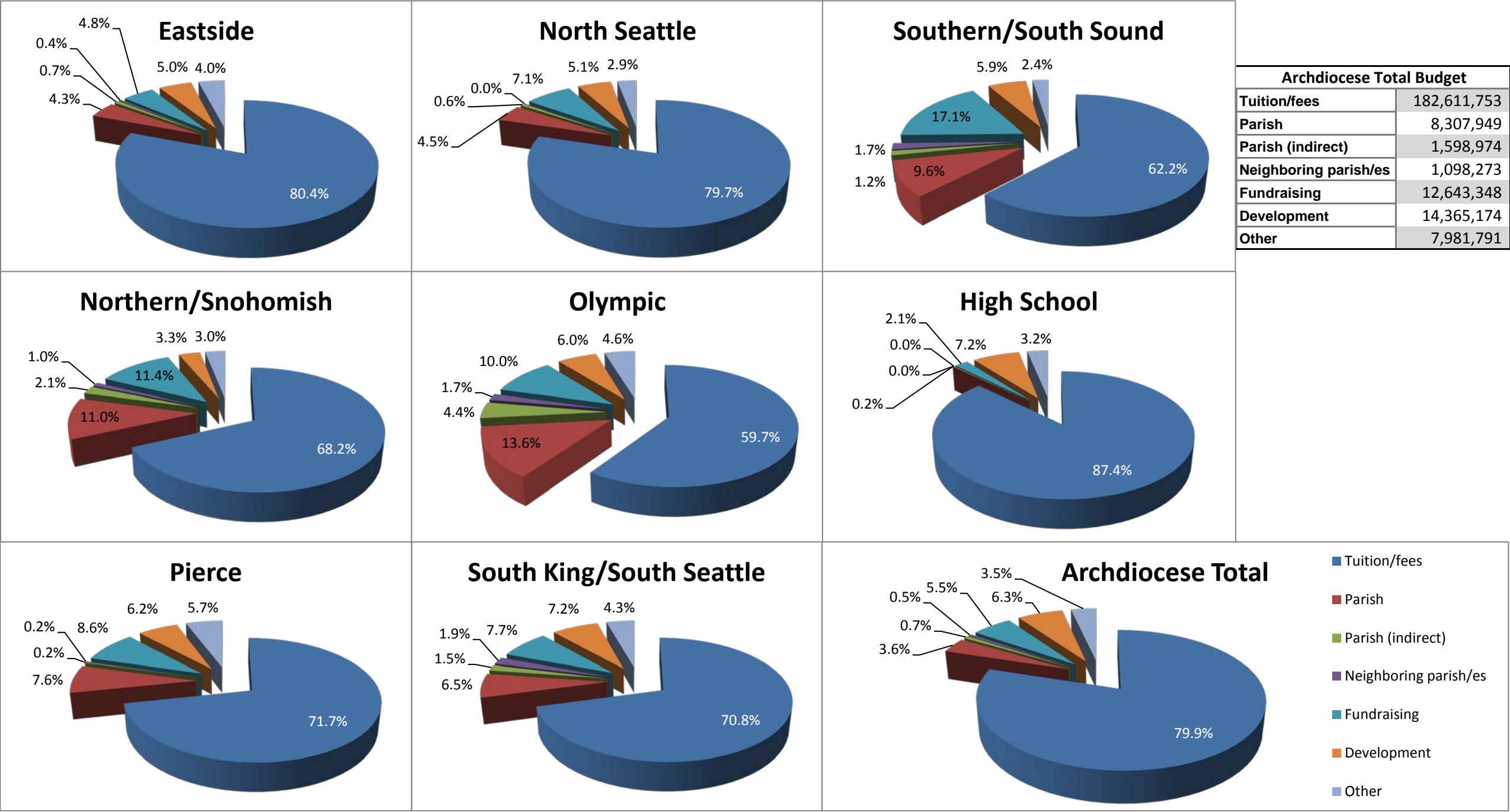
Secondary Schools

SCHOOLS	Arch. Mur.	Bellarmino	Blanchet	Eastside Cath.	Forest Ridge	Holy Names	Kennedy	O'Dea	Pope John	Seattle Prep	Seton High	REGION
LOCATION	Everett	Tacoma	Seattle	Sammamish	Bellevue	Seattle	Seattle	Seattle	Lacey	Seattle	Vancouver	TOTAL
Total enrollment	496	1,019	947	657	209	692	834	445	71	718	149	6,237
Pre-school enrollment	-	-	-	-	-	-	-	-	-	-	-	-
K-12 enrollment	496	1,019	947	657	209	692	834	445	71	718	149	6,237
Number of Catholics	296	697	555	393	66	509	540	284	56	532	124	4,052
Catholics %	60%	68%	59%	60%	32%	74%	65%	64%	79%	74%	83%	65%
Number of non-Catholics	200	322	392	264	143	183	294	161	15	186	25	2,185
Non-Catholic %	40%	32%	41%	40%	68%	26%	35%	36%	21%	26%	17%	35%
Number of minorities (non-white)	190	239	450	155	102	228	345	236	20	218	43	2,226
Minorities %	38%	23%	48%	24%	49%	33%	41%	53%	28%	30%	29%	36%
Hispanic enrollment	17	84	53	22	4	31	46	27	11	51	16	362
Hispanic %	3%	8%	6%	3%	2%	4%	6%	6%	15%	7%	11%	6%
Endowment	1,713,358	19,000,000	5,593,600	490,000	13,710,360	12,617,025	-	5,667,233	55,050	-	-	58,846,626
Number of local scholarships	5	-	385	215	90	222	6	23	3	-	80	1,029
Amount of local scholarships	3,000	2,200,000	2,032,000	-	512,100	1,200,040	24,287	181,716	19,975	-	278,225	6,451,343
Total budget \$	7,290,295	16,175,536	15,425,403	13,306,716	7,041,249	10,316,518	10,231,488	4,848,808	1,180,169	12,025,500	2,630,257	100,471,939
Tuition/fees	6,106,295	12,972,000	13,491,993	12,479,716	6,043,000	8,500,208	9,548,688	4,365,878	624,547	12,025,500	1,636,895	87,794,720
Tuition %	84%	80%	87%	94%	86%	82%	93%	90%	53%	100%	62%	87%
Parish	-	-	-	-	-	-	-	-	-	-	-	-
Parish (indirect)	9,000	-	165,000	-	-	-	-	-	-	-	-	174,000
Parish % of school budget	0%	-	1%	-	-	-	-	-	-	-	-	0%
Neighboring parish/es	-	-	-	-	-	-	-	-	-	-	1,410	1,410
Neighboring parish % of school budget	-	-	-	-	-	-	-	-	-	-	0%	0%
Fundraising	540,000	-	616,110	140,000	-	60,000	242,300	199,980	-	-	292,838	2,091,228
Fundraising %	7%	-	4%	1%	-	1%	2%	4%	-	-	11%	2%
Development	604,000	2,402,758	585,000	335,000	345,000	1,209,310	233,450	260,200	549,872	-	699,114	7,223,704
Development %	8%	15%	4%	3%	5%	12%	2%	5%	47%	-	27%	7%
Other	31,000	800,778	567,300	352,000	653,249	547,000	207,050	22,750	5,750	-	-	3,186,877
Other %	0%	5%	4%	3%	9%	5%	2%	0%	0%	-	-	3%
Per pupil cost	14,698	15,874	16,289	20,254	33,690	14,908	12,268	10,896	16,622	16,749	17,653	16,109
Tuition-1 Catholic student	13,395	13,220	11,680	18,995	27,600	13,572	10,230	10,538	10,975	16,300	11,072	14,325
Tuition-1 out-of-parish student	13,395	13,220	13,381	18,995	27,600	13,572	10,912	12,023	10,975	16,300	11,072	14,677
Tuition-1 Catholic (Pre-K)												
Tuition-1 out-of-parish (Pre-K)												

Archdiocese Totals

SCHOOLS	ELEMENTARY SCHOOLS	SECONDARY SCHOOLS	GRAND
LOCATION	TOTAL	TOTAL	TOTAL
Total enrollment	16,138	6,237	22,375
Pre-school enrollment	1,458	-	1,458
K-12 enrollment	14,680	6,237	20,917
Number of Catholics	12,980	4,052	17,032
Percentage of Catholics	80%	65%	76%
Number of non-Catholics	3,158	2,185	5,343
Percentage of non-Catholics	20%	35%	24%
Number of minorities (non-white)	5,734	2,226	7,960
Percentage of minorities	36%	36%	36%
Hispanic Enrollment	1,358	362	1,720
Percentage of Hispanic	8%	6%	8%
Endowment	41,982,872	58,846,626	100,829,498
Number of local scholarships	62,350	1,029	63,379
Amount of local scholarships	5,469,471	6,451,343	11,920,814
Total budget	\$ 128,160,323	\$ 100,471,939	\$ 228,632,262
Tuition/fees	94,817,033	87,794,720	182,611,753
Tuition %	74%	87%	80%
Parish	8,307,949	-	8,307,949
Parish (indirect)	1,424,974	174,000	1,598,974
Parish % of school budget	8%	0%	4%
Neighboring parish/es	1,096,863	1,410	1,098,273
Neighboring parish % of school budget	1%	0%	0%
Fundraising	10,552,120	2,091,228	12,643,348
Fundraising %	8%	2%	6%
Development	7,166,470	7,223,704	14,390,174
Development %	6%	7%	6%
Other	4,794,914	3,186,877	7,981,791
Other %	4%	3%	3%
	On Average		
Per pupil cost	7,942	16,109	---
Tuition-1 Catholic student (K-12)	6,239	14,325	---
Tuition-1 out-of-parish student (K-12)	7,751	14,677	---
Tuition-1 Catholic student (Pre-K)	4,459	---	---
Tuition-1 out-of-parish student (Pre-K)	5,058	---	---

2013 Data. Printed: 10/21/2013



Quick Data Reference by School Name 2013-2014

SCHOOL NAME	Enrollment	Faculty	Tuition Cath.	Tuition Non-Cath.	Total Budget
All Saints School, Puyallup	380	42	4,975	5,575	2,483,988
Archbishop Murphy High School, Everett	496	69	13,395	13,395	7,290,295
Assumption School, Bellingham	215	19	4,973	6,542	1,542,901
Assumption-St. Bridget School, Seattle	501	34	5,884	9,072	3,900,832
Bellarmino Preparatory School, Tacoma	1019	91	13,220	13,220	16,175,536
Bishop Blanchet High School, Seattle	947	81	11,680	13,381	15,425,403
Christ the King School, Seattle	215	20	5,566	7,937	1,684,351
Eastside Catholic High School, Sammamish	657	86	18,995	18,995	13,306,716
Eastside Catholic Middle School, Sammamish	281	33	18,995	18,995	5,776,595
Forest Ridge 5-8 School, Bellevue	182	37	27,600	27,600	7,041,249
Forest Ridge High School, Bellevue	209	33	27,600	27,600	7,041,249
Holy Family School, Auburn	183	17	5,930	6,918	1,109,800
Holy Family School, Kirkland	252	31	6,391	9,889	1,919,800
Holy Family School, Lacey	95	12	5,920	5,920	645,188
Holy Family School, Seattle	161	20	4,000	5,200	746,522
Holy Names Academy, Seattle	692	51	13,572	13,572	10,316,518
Holy Rosary School, Edmonds	248	16	5,612	9,508	1,877,368
Holy Rosary School, Seattle	496	49	5,256	8,125	3,284,913
HRRS/Juan Diego Academy, Tacoma	165	15	4,950	4,950	952,000
Immaculate Conception Regional School, Mt. Vernon	219	18	3,950	5,670	1,351,880
Immaculate Conception/OLPH School, Everett	256	21	4,932	7,191	1,635,730
Kennedy Catholic High School, Seattle	834	87	10,230	10,912	10,231,488
O'Dea High School, Seattle	445	31	10,538	12,023	4,848,808
Our Lady of Fatima School, Seattle	246	20	6,022	9,335	1,915,565
Our Lady of Guadalupe School, Seattle	262	26	5,640	8,460	1,736,635
Our Lady of Lourdes School, Vancouver	285	20	5,570	6,710	2,078,451
Our Lady of the Lake School, Seattle	281	25	5,920	8,440	2,070,300
Our Lady Star of the Sea School, Bremerton	170	14	4,365	5,400	974,000
Pacific Crest Academy, Camas	98	12	6,575	6,575	799,790
Pope John Paul II High School, Lacey	71	11	10,975	10,975	1,180,169
Queen of Angels School, Port Angeles	147	11	3,515	4,750	805,875
Sacred Heart School, Bellevue	414	48	10,320	10,320	4,069,731
Seattle Nativity, Seattle	16	5	1	1	850,275
Seattle Preparatory School, Seattle	718	104	16,300	16,300	12,025,500
Seton Catholic High School, Vancouver	149	24	11,072	11,072	2,630,257
St. Alphonsus School, Seattle	224	18	5,600	8,000	1,209,002
St. Anne School, Seattle	258	25	6,800	8,685	2,032,627
St. Anthony School, Renton	479	58	7,827	7,827	3,492,434
St. Benedict School, Seattle	207	21	5,279	6,985	1,664,874
St. Bernadette School, Seattle	223	13	4,224	6,370	1,207,988
St. Brendan School, Bothell	254	20	5,022	7,862	1,629,080
St. Catherine School, Seattle	239	19	5,532	7,956	1,831,337
St. Cecilia School, Bainbridge Is.	103	12	5,550	5,925	667,500
St. Charles Borromeo School, Tacoma	517	24	5,455	6,515	3,145,208
St. Edward, Seattle	143	12	4,575	5,000	918,070
St. Frances Cabrini School, Tacoma	223	17	4,712	4,712	1,366,720
St. Francis of Assisi School, Seahurst	469	27	4,162	6,589	2,590,497
St. George School, Seattle	246	17	4,630	6,070	263,299
St. John, Seattle	546	34	7,987	7,987	3,774,452
St. Joseph School, Chehalis	147	17	3,262	3,837	664,363
St. Joseph School, Issaquah	345	27	6,551	8,041	2,520,929
St. Joseph School, Seattle	607	67	11,040	11,040	7,695,374
St. Joseph School, Vancouver	354	25	4,816	6,829	4,087,437
St. Louise School, Bellevue	463	44	5,352	8,604	3,260,031
St. Luke School, Shoreline	300	25	5,460	8,420	2,100,600
St. Madeleine Sophie School, Bellevue	191	20	7,990	8,990	1,553,100
St. Mark School, Shoreline	181	14	6,300	6,300	845,504
St. Mary Magdalen School, Everett	373	35	5,791	7,275	2,383,900
St. Mary School, Aberdeen	140	16	3,380	4,597	837,200
St. Matthew School, Seattle	200	14	4,950	6,720	1,464,000
St. Michael School, Olympia	254	18	5,253	8,188	1,856,654
St. Michael School, Snohomish	94	7	4,987	4,987	409,154
St. Monica School, Mercer Island	199	30	6,250	9,850	1,711,402
St. Nicholas School, Gig Harbor	181	23	4,600	6,400	1,038,833
St. Patrick School, Tacoma	389	31	4,900	7,200	2,386,036
St. Paul School, Seattle	142	13	4,645	6,159	1,208,688
St. Philomena School, Des Moines	260	21	5,085	6,145	1,407,415
St. Pius X School, Mountlake Terrace	120	13	4,600	7,000	659,200
St. Rose School, Longview	135	20	4,023	5,775	947,351
St. Therese School, Seattle	139	16	5,918	7,282	1,109,600
St. Thomas More School, Lynnwood	262	20	5,000	6,320	1,619,070
St. Vincent de Paul, Federal Way	251	18	4,925	6,825	1,663,719
Villa Academy, Seattle	385	39	16,725	16,725	6,897,467
Visitation School, Tacoma	127	9	4,800	5,500	761,469

2013-2014 Glossary of Definitions for NCEA and OCS Data Collection

SCHOOLS:

Elementary/Middle: generally Pre-K-8, K-8, 5-8. **Pre-K** is included if they are part of the school and not a separate parish daycare program.

Secondary: 9-12.

LOCATION:

Urban: within the limits of a major city or one with at least 50,000 population.

Inner-city: located within a major city and characterized by a concentration (>40%) of low income inhabitants.

Suburban: outside of, but tangent to, a major city or its immediate suburbs.

Rural: located outside of an urban or suburban area and having fewer than 50,000 inhabitants.

RACE:

Students are counted in the category of which they are most characteristic.

Asian: identifies as having origins in Far East, Southeast Asia or Indian Sub-continent: (Cambodia, China, India, Japan, Korea, Malaysia, Pakistan, Philippines, Thailand, Vietnam, etc.)

American Indian/Native Alaskan: identifies as one of the two classifications of Native Americans.

Black/African American: identifies as black whether from US, Africa or other parts of the world.

Native Hawaiian/Other Pacific Islander: includes native Hawaiians living anywhere in the US (but not non-Hawaiian residents of Hawaii) also includes other Pacific Islands: Guam, Samoa, Fiji, Micronesia, and Polynesia.

White: Caucasian from any part of the world (including Middle East) and does not identify as one of the other groups.

Multi-racial: person belongs to more than one racial group.

ETHNICITY:

Hispanic is now reported as a separate ethnic category. All students are counted as either Hispanic or Non-Hispanic.

PROFESSIONAL STAFF:

Includes all paid professionals: faculty, administrators, counselors, etc. who have responsibility for the teaching and learning process. Does not include development, admissions directors, or volunteers, etc.

Full time: paid employees who regularly work a full day or 100% of contract. Full time employees may have one position or divide their time between more than one position (teaching/administration, etc.) but work the full schedule.

Part-time: paid employees who work less than the full school day/week or 100% of contract.

BUDGET:

Parish Direct Subsidy: consists of either a cash transfer from the parish to the school or the actual payroll costs of shared personnel.

Parish Indirect Subsidy: includes shared cost items that are not booked directly to school operations.

Parish % of School Budget: is the % the School Budget represented by Parish Subsidy.

Neighboring Parishes: is the amount of subsidy from other parishes with students in the school.

Fundraising: is revenue generated by sales, such as auctions.

Development: is revenue from donations, such as annual appeal.

Other: is interest, rentals, and all the other revenue sources for a school.

Per Pupil Cost: is the actual cost of educating a student, including all actual costs as well as some provision for future building and capital needs. (Total Budget/Total Enrollment)

