

School Data

2014-2015

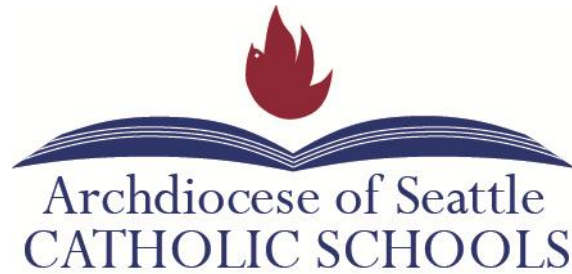
Online School Data



Additional data not presented in this book can be found online at the following links.

Technology Survey:	http://www.ocsw.org/ts
Instructional Materials:	http://www.ocsw.org/im
Assessment Search:	http://www.ocsw.org/as
Longitudinal Data:	http://www.ocsw.org/lcd
Employee Database (CSED):	http://www.ocsw.org/csed
Calendar:	http://www.ocsw.org/calendar
Data Annual Reports:	http://www.ocsw.org/apps/ncea
Iowa and ITBS Annual Test Data:	http://www.ocsw.org/assessment
ISL - Accreditation:	http://www.ocsw.org/school-data/ISL
School Achievement:	http://www.ocsw.org/apps/achievement/index
This book in PDF format:	http://www.ocsw.org/files/uploads/1/2014-2015-Data-Book.pdf





November 2014

Dear School Leadership,

The 2014-2015 School Data Book (paper version) has been revised and updated to present a **snapshot summary of core census and budget data** of the PreK-12 Catholic schools of the Archdiocese of Seattle. These self-reported statistics from each school community are valued and helpful for planning purposes. Confidential individual salary information for the principal, president, development director, and secretary is not included for full distribution in this publication. Please note: The summary and enrollment pages for each region do not reflect the new regional configurations. Data re-alignment will occur this year.

Pastors and principals may request in writing a confidential datasheet that will show the specific salary information for their respective region only. Requests should be directed to the Superintendent of Catholic Schools. Since it is self-reported data, this confidential information should be used only as a guide to planning.

The **electronic** version of the 2014-2015 School Data Report is where the **complete** dynamic and interactive Annual School Data report and longitudinal data is available for study. Printing and PDF capabilities are available. Principals/School Pastors have a private password on **OCSWW.org** to study the comprehensive 2014-2015 data collection that includes testing and assessment information, salary averages, instructional materials, and technology trends that are being implemented in our 74 schools. We hope this body of information will provide each reader with robust information about our Catholic schools.

Sincerely,
Patrick Haggarty, Ed.D.
Superintendent of Catholic Schools

Arch/Diocese: Archdiocese of Seattle Person Reporting: Sandra B. Smith Title: Assisting Superintendent
 State: Washington Phone: 206 - 382 - 4861 Fax: 206 - 654 - 4651 E-mail: ccs@seattlearch.org

A. School Descriptives

Enter the number of schools in each block:

B. Student Descriptives and Total Enrollment

(include Pre-K if students are part of the school and not a separate parish daycare)

National Catholic
Educational Association**ELEMENTARY AND MIDDLE SCHOOL**

Totals of B1 and B2 must agree.

A.1a. and b. Location and Sponsorship	Single Parish	Interparish	Diocesan	Religious Congregation or Private	Total
Urban	19	4	4	2	29
Inner City	4	-	-	-	4
Suburban	14	4	3	3	24
Rural	2	4	-	-	6
Total	39	12	7	5	63

B1(a). Student Ethnicity and Religion			
	Catholic	Non-Catholic	Total
Hispanic	1,307	115	1,422
Non-Hispanic	11,514	2,983	14,492
TOTAL	12,821	3,093	15,914 *

B1(b). Student Race and Religion (Students should be counted in the category of which they are most characteristic.)			
	Catholic	Non-Catholic	Total
American Indian/ Native Alaskan	40	25	65
Asian	1,687	314	2,001
Black	406	380	786
Native Hawaiian/ Pacific Islander	285	22	307
White	8367	1,905	10,272
Two or more races	2036	447	2,483
TOTAL	12,821	3,093	15,914 *

*Totals for B1(b) and B1(a) must be the same total as B2 elementary column.

SECONDARY SCHOOL

A.1a. and b. Location and Sponsorship	Single Parish	Interparish	Diocesan	Religious Congregation or Private	Total
Urban	-	-	2	3	5
Inner City	-	-	2	-	2
Suburban	-	1	1	2	4
Rural	-	-	-	-	-
Total	-	1	5	5	11

B1(a). Student Ethnicity and Religion			
	Catholic	Non-Catholic	Total
Hispanic	294	56	350
Non-Hispanic	3,944	1,906	5850
TOTAL	4,238	1,962	6,200 *

B1(b). Student Race and Religion (Students should be counted in the category of which they are most characteristic.)			
	Catholic	Non-Catholic	Total
American Indian/ Native Alaskan	47	25	72
Asian	378	355	733
Black	109	209	318
Native Hawaiian/ Pacific Islander	122	39	161
White	2,668	1,091	3,759
Two or more races	914	243	1,157
TOTAL	4,238	1,962	6,200 *

*Totals for B1(b) and B1(a) must be the same as total as the B2 secondary column.

B2. Enrollment by Grade Level

Enter grade level totals according to the type of school. If an elementary school has a ninth grade, put the student count in the ninth grade box in the elementary column; if a secondary has grades below ninth, those numbers go in the secondary column.

	Elementary	Secondary
Prekindergarten	1,398	
Kindergarten	1,520	
First	1,585	
Second	1,564	
Third	1,543	
Fourth	1,593	
Fifth	1,628	
Sixth	1,709	
Seventh	1,686	
Eighth	1,688	
Ninth		1,615
Tenth		1,605
Eleventh		1,538
Twelfth		1,442
Ungraded		
TOTAL	15,914 *	6,200 *

*B2 elementary total must equal B1 elementary total;
B2 secondary total must equal B1 secondary total.

Before completing the information, please refer to the instruction/definition sheet that accompanies this form.

If you have any questions, contact Sr. Dale McDonald at mcdonald@ncea.org or phone: 571.257.0010 or fax: 703.243.0025.

Superintendent's approval: _____

(Signature)

C. Professional Staff

Include all **paid professionals** (administrators and faculty) who have responsibility for the teaching/learning process. Do not include development or admissions directors, teachers' aides or support staff.

C1. Professional Staff Descriptives

List **all** the full- and part-time professional staff in each category.

C.2 Full and Part-time Staffing: List all full and part-time professionals in the appropriate categories and total them across and down. Total in C.1 and C.2 must agree with each other.

ELEMENTARY AND MIDDLE SCHOOL

C1(b). Professional Staff Race and Religion	Catholic	Non-Catholic	TOTAL	C.2 Professional Staff	C2a. Full-time	C2b. Part-time	C2c. Totals (add C2a & C2b)
American Indian/ Native Alaskan	7	-	7	Female Religious	28	14	42
Asian	22	10	32	Male Religious	5	-	5
Black	9	4	13	Clergy	-	-	-
Native Hawaiian/ Pacific Islander	11	2	13	Lay, Male	174	49	223
White	1,131	206	1,337	Lay, Female	959	266	1,225
Two or more races	71	22	93	TOTAL	1,166	329	1,495 *
TOTAL	1,251	244	1,495 *	*These three numbers must be the same.			

C1(a). Faculty Ethnicity and Religion			
	Catholic	Non-Catholic	Total
Hispanic	66	2	68
Non-Hispanic	1,185	242	1,427
TOTAL	1,251	244	1,495 *

SECONDARY SCHOOL

C1(b). Professional Staff Race and Religion	Catholic	Non-Catholic	TOTAL	C.2 Professional Staff	C2a. Full-time	C2b. Part-time	C2c. Totals (add C2a & C2b)
American Indian/ Native Alaskan	-	-	-	Female Religious	3	1	4
Asian	12	7	19	Male Religious	3	-	3
Black	10	9	19	Clergy	4	1	5
Native Hawaiian/ Pacific Islander	4	1	5	Lay, Male	216	22	238
White	375	135	510	Lay, Female	283	43	326
Two or more races	14	9	23	TOTAL	509	67	576 *
TOTAL	415	161	576 *	*These three numbers must be the same.			

C1(a). Faculty Ethnicity and Religion			
	Catholic	Non-Catholic	Total
Hispanic	16	5	21
Non-Hispanic	399	156	555
TOTAL	415	161	576 *

D. Government Funded Programs

1a. The number of schools that have students who receive Title 1 Services	43
1b. Total number of students who receive Title 1 services	650
2a. Number of schools that offer federal nutrition programs ...	17
2b. Number of students who receive free or reduced price breakfast.....	129
2c. Number of students who receive free/reduced price lunch	513
3A. Number of schools that have students receiving subsidized transportation services (state or local)	5
3b. Number of students who receive subsidized transportation	140
4a. Number of schools that received E-rate discounts during the last school year.....	10
4b. Number of schools that applied for the E-rate this school year	9

E. Additional Information

	ELE	SEC
1. Number of new schools that opened this school year	0	0
2. Number of schools that closed, consolidated or merged at the end of last year	0	0
3. Number of schools with a board, commission or council ...	74	
4. Number of schools with a waiting list for any grade.....	46	
5. Number of schools that provide students with access to Internet.....	74	
6. Number of schools with an extended day program	62	
7. Number of students with a diagnosed disability.....	TBD	

F. Diocesan Education Office Information

1. Is there a designated person with these or equivalent titles?	Yes Lay	Yes Religious	No
a. Vicar for Education			✓
b. Superintendent	✓		
c. Director of Religious Education			✓
2. If any of these positions are held by the same person, circle the appropriate combination:			
a & b & c a & b a & c b & c			
3. Schools Office Personnel			
a. Number of associate/assistant superintendents			
b. Number of other professional staff			
c. Number of support staff			

Thank you! Please return by **November 3, 2014**

Dale McDonald, PBVM

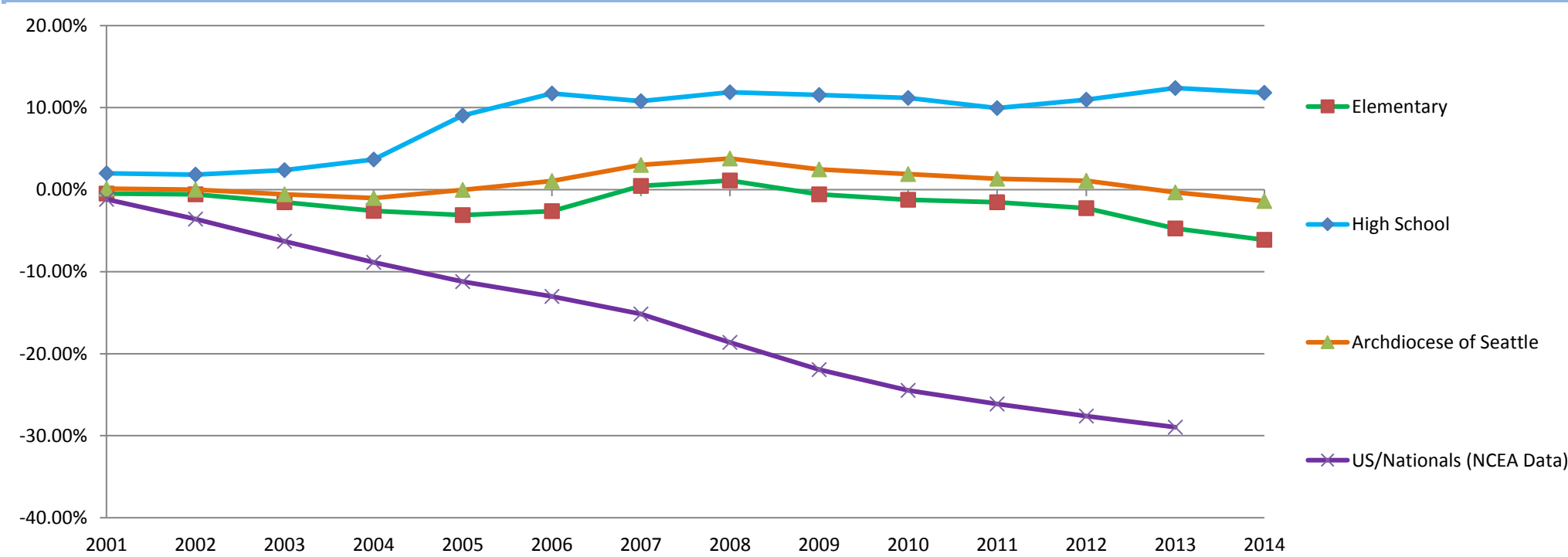
NCEA, 1005 N. Glebe Road, Suite 525, Arlington, VA 22201

Trend Data

Total Enrollment: 2007 - 2014

Region/ Year	2007	2008		2009		2010		2011		2012		2013		2014	
Eastside	2,286	2,597	13.6%	2,498	-3.8%	2,544	1.8%	2,640	3.8%	2,671	1.2%	2581	-3.4%	2506	-2.9%
North Seattle	3,773	3,804	0.8%	3,793	-0.3%	3,849	1.5%	3,880	0.8%	3,816	-1.6%	3783	-0.9%	3787	0.1%
Northern/Snohomish	2,140	2,086	-2.5%	2,032	-2.6%	1,962	-3.4%	1,915	-2.4%	1,812	-5.4%	1787	-1.4%	1850	3.5%
Olympic	596	541	-9.2%	540	-0.2%	565	4.6%	561	-0.7%	588	4.8%	601	2.2%	603	0.3%
Pierce	2,075	2,095	1.0%	2,018	-3.7%	1,962	-2.8%	1,885	-3.9%	1,883	-0.1%	1801	-4.4%	1761	-2.2%
South King/South Seattle	4,256	4,250	-0.1%	4,188	-1.5%	4,143	-1.1%	4,143	0%	4,149	0.1%	4077	-1.7%	4024	-1.3%
Southern/South Sound	1,879	1,745	-7.1%	1,762	1.0%	1,693	-3.9%	1,642	-3.0%	1,629	-0.8%	1508	-7.4%	1408	-6.6%
Elementary	17,005	17,118	0.7%	16,831	-1.7%	16,718	-0.7%	16,666	-0.3%	16,548	-0.7%	16138	-2.5%	15939	-1.2%
High School	6,139	6,206	1.1%	6,186	-0.3%	6,163	-0.4%	6,088	-1.2%	6,150	1.0%	6237	1.4%	6200	-0.6%
Archdiocese Total	23,144	23,324	0.8%	23,017	-1.3%	22,881	-0.6%	22,754	-0.6%	22,698	-0.2%	22,375	-1.4%	22,139	-1.1%

Chart of Percent Change in Total Enrollment 2001 - 2014



Trend Data

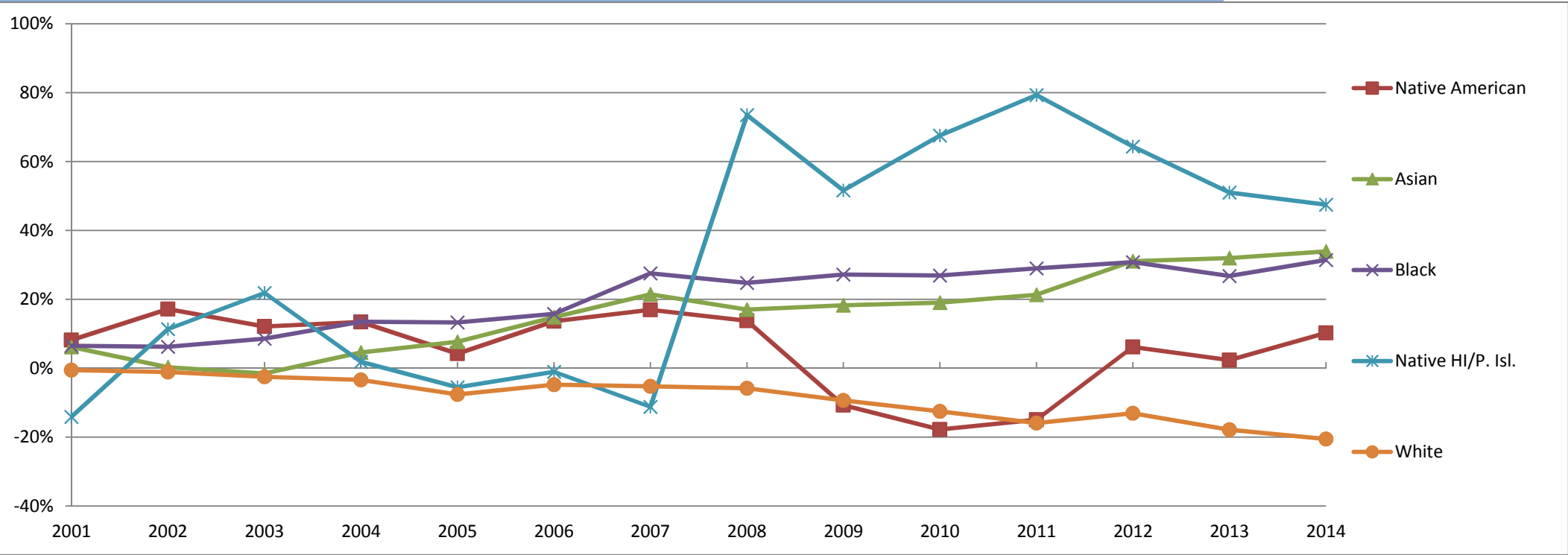
Archdiocese of Seattle Enrollment by Ethnicity: 2007 - 2014

ETHNICITY	2007	2008	%+/-	2009	%+/-	2010	%+/-	2011	%+/-	2012	%+/-	2013	%+/-	2014	%+/-
Hispanic	1,306	1,338	2.5%	1,381	3.2%	1,390	0.7%	1,492	7.3%	1,582	6.0%	1,721	8.8%	1,772	3.0%

Archdiocese of Seattle Enrollment by Race: 2007 - 2014

RACE	2007	2008	%+/-	2009	%+/-	2010	%+/-	2011	%+/-	2012	%+/-	2013	%+/-	2014	%+/-
Native American	156	151	-3.2%	114	-24.5%	106	-7.0%	109	2.8%	132	21.1%	127	-3.8%	137	7.9%
Asian	2,428	2,320	-4.4%	2,349	1.3%	2,367	0.8%	2,421	2.3%	2,657	9.7%	2,681	0.9%	2,734	2.0%
Black	1,065	1,036	-2.7%	1,061	2.4%	1,058	-0.3%	1,080	2.1%	1,099	1.8%	1,055	-4.0%	1,104	4.6%
Native HI/P. Isl.	352	650	84.7%	508	-21.8%	589	15.9%	658	11.7%	560	-14.9%	485	-13.4%	468	-3.5%
White	16,411	16,311	-0.6%	15,741	-3.5%	15,248	-3.1%	14,731	-3.4%	15,146	2.8%	14,420	-4.8%	14,031	-2.7%
Multi-racial	2,732	2,856	4.5%	3,244	13.6%	3,513	8.3%	3,755	6.9%	3,104	-17.3%	3,607	16.2%	3,665	1.6%
	25,151	25,332		25,026		24,891		22,754		22,698		22,375		22,139	

Chart of Percent Change in Total Enrollment by Race 2001 - 2014



Government Funded Programs	All Schools		Eastside Deanery		North Seattle		Northern Snohomish		Olympic Deanery		Pierce Deanery		South King South Seattle		South Sound		High Schools	
The number of schools that have students who receive Title 1 Services	43	58.1%	4	44.4%	4	30.8%	7	87.5%	3	75.0%	4	66.7%	14	93.3%	6	75.0%	1	9%
Total number of students who receive Title I services	650	3.0%	12	0.5%	29	0.8%	94	5.4%	40	6.6%	58	3.3%	369	9.4%	46	3.3%	2	0%
Number of schools that offer federal nutrition programs	19	25.7%	1	11.1%	1	7.7%	1	12.5%	1	25.0%	3	50.0%	4	26.7%	5	62.5%	3	27.3%
Number of students who receive free or reduced-price breakfast	129	1%		0%		0%		0%		0%	96	5%	33	1%		0%		0%
Number of students who receive free or reduced-price lunch	513	2.3%	14	0.6%	1	0.0%	31	1.8%	10	1.7%	178	10.1%	108	2.7%	100	7.2%	71	1.1%
Number of schools that have students receiving subsidized transportation services (state or local)	5	6.8%	1	11.1%		0%		0%		0%		0%		0%		0.0%	4	36.4%
Number of students who receive subsidized transportation services (busing, travel passes, compensation to parents, etc.)	140	0.6%	17	0.7%		0%		0%		0%		0%		0%		0.0%	49	0.8%
Number of schools that received E-rate discounts during the last school year	10	13.5%		0%	2	15.4%	1	12.5%		0%	1	17%	1	6.7%	1	12.5%	4	36.4%
Number of schools that applied for the E-rate this school year	9	12.2%		0%	3	23.1%	1	12.5%		0%	1	17%	1	6.7%	1	12.5%	2	18.2%

Additional Information

Number of schools with a Board, Commission or Council	74	100%	9	100%	13	100%	13	100%	4	100%	4	100%	15	100%	8	100%	11	100%
Number of schools with a waiting list for any grade	46	62%	7	78%	11	85%	4	50%	1	25%	5	83%	9	60%	4	50%	5	45%
Number of schools that provide students with access to the Internet	74	100%	9	100%	13	100%	13	100%	4	100%	4	100%	15	100%	8	100%	11	100%
Number of schools with an Extended Day Program	62	84%	9	100%	11	85%	8	100%	4	100%	6	100%	15	100%	7	88%	2	18%

Eastside Region

SCHOOLS LOCATION	Holy Fam. Kirkland	Sac. Heart Bellevue	St. Brendan Bothell	St. Joseph Issaquah	St. Louise Bellevue	St. Mad. Sop. Bellevue	St. Mon. Mercer Is.	REGION TOTAL
Total enrollment	248	409	248	329	441	194	201	2,070
Pre-school enrollment	-	16	32	41	18	16	29	152
K-8 enrollment	248	393	216	288	423	178	172	1,918
Number of Catholics	242	370	239	266	425	156	183	1,881
Catholics %	98%	90%	96%	81%	96%	80%	91%	91%
Number of non-Catholics	6	39	9	63	16	38	18	189
Non-Catholic %	2%	10%	4%	19%	4%	20%	9%	9%
Number of minorities (non-white)	58	96	65	58	169	86	43	575
Minorities %	23%	23%	26%	18%	38%	44%	21%	28%
Hispanic enrollment	5	28	32	14	43	22	8	152
Hispanic %	2%	7%	13%	4%	10%	11%	4%	7%
Endowment Income	5,500	30,490	-	-	75,000	-	32,000	142,990
Amount of local scholarships	130,000	100,000	-	50,000	97,000	449,000	15,000	841,000
Tuition/fees	1,559,000	3,113,159	1,216,000	2,205,624	2,356,558	1,678,000	1,152,224	13,280,565
Tuition %	67%	74%	76%	84%	73%	82%	64%	75%
Parish	398,000	350,000	216,940	115,000	255,560	87,000	225,000	1,647,500
Parish (indirect)	-	-	-	-	220,000	-	100,000	320,000
Parish % of budget	17%	8%	14%	4%	15%	4%	18%	11%
Neighboring parish/es	-	-	36,800	39,600	23,000	1,000	1,800	102,200
Neighboring parish % of budget	-	-	2%	2%	1%	0%	0%	1%
Fundraising and Donations	322,000	475,000	128,500	304,000	379,000	270,000	385,000	2,263,500
Fundraising and Donations %	14%	11%	8%	12%	12%	13%	21%	13%
Other	30,700	218,925	36,800	14,000	150,000	8,600	-	459,025
Other %	1%	5%	2%	1%	4%	1%	-	3%
Per pupil cost	9,313	10,164	6,593	8,140	7,674	8,225	9,274	8,514
Tuition-1 Catholic student	6,672	10,835	5,222	6,944	5,616	7,990	6,747	7,147
Tuition-1 out-of-parish student	10,332	10,835	8,176	8,523	9,063	8,990	10,350	9,467

2014 Data. Printed: 11/21/2014

North Seattle Region

SCHOOLS	Assu/St.B	Chr. King	OL Fatima	OL Lake	St. Al	St. Anne	St. Ben.	St. Cath.	St. John	St. Luke	St. Mark	St. Matt	REGION
LOCATION	Seattle	Seattle	Seattle	Seattle	Seattle	Seattle	Seattle	Seattle	Seattle	Seattle	Seattle	Seattle	TOTAL
Total enrollment	502	204	246	295	229	260	213	226	541	321	157	193	3,387
Pre-school enrollment	-	24	-	57	33	20	40	32	58	19	20	16	319
K-8 enrollment	502	180	246	238	196	240	173	194	483	302	137	177	3,068
Number of Catholics	469	151	220	212	161	241	134	162	455	247	127	166	2,745
Catholics %	93%	74%	89%	72%	70%	93%	63%	72%	84%	77%	81%	86%	81%
Number of non-Catholics	33	53	26	83	68	19	79	64	86	74	30	27	642
Non-Catholic %	7%	26%	11%	28%	30%	7%	37%	28%	16%	23%	19%	14%	19%
Number of minorities (non-white)	41	90	34	61	49	60	61	73	125	79	102	115	890
Minorities %	8%	44%	14%	21%	21%	23%	29%	32%	23%	25%	65%	60%	26%
Hispanic enrollment	5	25	4	16	11	8	6	3	47	16	7	9	157
Hispanic %	1%	12%	2%	5%	5%	3%	3%	1%	9%	5%	4%	5%	5%
Endowment Income	-	-	85,000	33,000	-	70,000	-	-	-	-	65,000	49,415	302,415
Amount of local scholarships	169,836	124,923	100,000	70,000	-	-	40,000	-	337,959	120,000	-	-	962,718
Tuition/fees	3,281,002	1,488,867	1,514,272	1,976,000	1,097,658	1,754,000	1,419,855	1,359,327	3,622,999	1,565,790	467,000	860,848	20,407,618
Tuition %	76%	86%	71%	86%	81%	83%	83%	79%	85%	81%	56%	66%	79%
Parish	283,069	105,000	100,000	80,000	75,000	50,000	10,000	128,000	-	250,000	153,000	152,000	1,386,069
Parish (indirect)	-	67,800	-	-	-	-	25,620	-	128,645	-	-	-	222,065
Parish % of budget	7%	10%	5%	3%	6%	2%	2%	7%	3%	13%	18%	12%	6%
Neighboring parish/es	1,716	-	-	8,000	-	-	-	-	-	-	-	900	10,616
Neighboring parish % of budget	0%	-	-	0%	-	-	-	-	-	-	-	0%	0%
Fundraising and Donations	572,052	139,000	150,000	205,000	130,000	250,000	192,758	229,559	591,000	120,000	151,000	83,273	2,813,642
Fundraising and Donations %	13%	8%	7%	9%	10%	12%	11%	13%	14%	6%	18%	6%	11%
Other	162,425	6,000	272,023	-	50,000	-	87,541	-	29,098	8,600	-	151,409	767,096
Other %	4%	0%	13%	-	4%	-	5%	-	1%	0%	-	12%	3%
Per pupil cost	8,566	10,037	8,278	7,692	5,907	7,900	8,149	7,597	7,456	6,057	4,911	6,469	7,514
Tuition-1 Catholic student	6,072	5,834	6,383	6,220	5,810	7,050	5,640	5,698	6,357	5,730	5,000	5,198	5,916
Tuition-1 out-of-parish student	9,432	8,324	9,428	8,610	8,300	8,900	7,470	8,195	8,475	8,840	6,400	7,056	8,286

2014 Data. Printed: 11/21/2014

Northern/Snohomish Region

SCHOOLS	Assumption	Holy Rosary	Imm. Conc.	IC/OLPH	St. Mary Mag.	St. Michael	St. Pius X	St. T. More	REGION
LOCATION	Bellingham	Edmonds	Mt. Vernon	Everett	Everett	Snohomish	Mtlk Terace	Lynnwood	TOTAL
Total enrollment	194	256	234	250	398	103	148	267	1,850
Pre-school enrollment	19	19	28	35	47	29	18	35	230
K-8 enrollment	175	237	206	215	351	74	130	232	1,620
Number of Catholics	181	224	176	215	358	92	141	240	1,627
Catholics %	93%	88%	75%	86%	90%	89%	95%	90%	88%
Number of non-Catholics	13	32	58	35	40	11	7	27	223
Non-Catholic %	7%	13%	25%	14%	10%	11%	5%	10%	12%
Number of minorities (non-white)	87	60	80	62	214	11	102	161	777
Minorities %	45%	23%	34%	25%	54%	11%	69%	60%	42%
Hispanic enrollment	32	13	41	35	40	30	41	14	246
Hispanic %	16%	5%	18%	14%	10%	29%	28%	5%	13%
Endowment Income	46,000	391,145	117,954	20,000	-	-	-	-	575,099
Amount of local scholarships	100,000	60,000	-	109,000	-	114,694	25,000	51,258	459,952
Tuition/fees	943,935	1,311,291	866,435	1,098,670	1,904,470	239,300	474,825	1,326,605	8,165,531
Tuition %	67%	61%	66%	77%	77%	58%	63%	76%	70%
Parish	105,000	150,000	85,603	199,452	220,000	37,500	110,000	211,402	1,118,957
Parish (indirect)	-	-	-	75,000	-	-	-	-	75,000
Parish % of budget	7%	7%	7%	19%	9%	9%	15%	12%	10%
Neighboring parish/es	48,000	-	65,197	3,130	56,400	-	4,200	1,880	178,807
Neighboring parish % of budget	3%	-	5%	0%	2%	-	1%	0%	2%
Fundraising and Donations	250,000	282,260	147,620	110,000	310,000	109,500	172,500	172,700	1,554,580
Fundraising and Donations %	18%	13%	11%	8%	13%	27%	23%	10%	13%
Other	60,980	-	98,200	-	25,000	23,000	-	25,803	232,983
Other %	4%	-	7%	-	1%	6%	-	1%	2%
Per pupil cost	8,855	6,811	5,398	6,881	6,874	3,974	5,145	6,511	6,476
Tuition-1 Catholic student	5,220	5,780	4,150	5,178	6,050	4,987	4,850	5,250	5,183
Tuition-1 out-of-parish student	6,780	9,508	5,955	7,550	7,600	4,987	7,250	6,760	7,049

2014 Data. Printed: 11/21/2014

Olympic Region

Summary of Budget and Enrollment

SCHOOLS LOCATION	Star of Sea Bremerton	Queen of Angels Pt. Angeles	St. Cecilia Bainbridge Is.	St. Nicholas Gig Harbor	REGION TOTAL
Total enrollment	193	137	104	169	603
Pre-school enrollment	31	18	20	21	90
K-8 enrollment	162	119	84	148	513
Number of Catholics	182	113	79	165	539
Catholics %	94%	82%	76%	98%	89%
Number of non-Catholics	11	24	25	4	64
Non-Catholic %	6%	18%	24%	2%	11%
Number of minorities (non-white)	65	41	14	16	136
Minorities %	34%	30%	13%	9%	23%
Hispanic enrollment	7	9	12	19	47
Hispanic %	4%	7%	12%	11%	8%
Endowment Income	40,000	35,000	-	4,000	79,000
Amount of local scholarships	-	272,714	85,470	-	358,184
Tuition/fees	649,370	647,539	467,661	774,370	2,538,940
Tuition %	60%	59%	63%	74%	64%
Parish	139,083	135,000	60,000	50,000	384,083
Parish (indirect)	66,835	-	20,000	53,283	140,118
Parish % of budget	19%	12%	11%	10%	13%
Neighboring parish/es	-	74,700	-	-	74,700
Neighboring parish % of budget	-	7%	-	-	2%
Fundraising and Donations	152,524	113,100	178,262	208,000	651,886
Fundraising and Donations %	14%	10%	24%	20%	16%
Other	106,835	161,700	41,153	7,500	317,188
Other %	10%	15%	6%	1%	8%
Per pupil cost	5,775	8,263	7,376	6,468	6,811
Tuition-1 Catholic student	4,452	3,620	5,825	4,700	4,649
Tuition-1 out-of-parish student	5,508	4,895	6,280	6,500	5,796

2014 Data. Printed: 11/21/2014

Pierce Region

SCHOOLS LOCATION	All Saints Puyallup	Holy Rosary Tacoma	St. Charles B. Tacoma	St. Frances C. Tacoma	St. Patrick Tacoma	Visitation Tacoma	REGION TOTAL
Total enrollment	345	168	521	216	380	131	1,761
Pre-school enrollment	54	16	40	14	53	19	196
K-8 enrollment	291	152	481	202	327	112	1,565
Number of Catholics	202	104	383	146	314	92	1,241
Catholics %	59%	62%	74%	68%	83%	70%	70%
Number of non-Catholics	143	64	138	70	66	39	520
Non-Catholic %	41%	38%	26%	32%	17%	30%	30%
Number of minorities (non-white)	128	130	164	115	62	75	674
Minorities %	37%	77%	31%	53%	16%	57%	38%
Hispanic enrollment	39	77	35	31	28	26	236
Hispanic %	11%	46%	7%	14%	7%	20%	13%
Endowment Income	50,000	-	120,000	30,000	-	11,000	211,000
Amount of local scholarships	215,000	-	-	30,000	45,000	-	290,000
Tuition/fees	1,941,999	578,100	2,546,598	910,161	1,903,375	427,747	8,307,980
Tuition %	76%	58%	79%	66%	83%	53%	74%
Parish	122,500	16,500	400,000	100,000	186,330	86,000	911,330
Parish (indirect)	50,000	15,000	-	-	-	-	65,000
Parish % of budget	7%	3%	12%	7%	8%	11%	9%
Neighboring parish/es	11,000	3,500	-	12,500	10,500	1,000	38,500
Neighboring parish % of budget	0%	0%	-	1%	0%	0%	0%
Fundraising and Donations	400,650	171,500	156,000	175,000	180,000	131,000	1,214,150
Fundraising and Donations %	16%	17%	5%	13%	8%	16%	11%
Other	38,329	236,000	-	163,000	10,500	151,300	599,129
Other %	2%	24%	-	12%	0%	19%	5%
Per pupil cost	7,433	-	5,955	6,299	6,028	6,084	5,744
Tuition-1 Catholic student	5,124	5,250	5,673	4,853	5,625	4,965	5,248
Tuition-1 out-of-parish student	-	5,250	6,776	4,853	7,225	5,665	5,954

2014 Data. Printed: 11/21/2014

Southern Region

SCHOOLS LOCATION	OL Lourdes Vancouver	St. Joseph Chehalis	St. Joseph Vancouver	St. Mary Aberdeen	St. Michael Olympia	St. Rose Longview	REGION TOTAL
Total enrollment	275	153	323	127	240	120	1,238
Pre-school enrollment	42	24	-	19	-	16	101
K-8 enrollment	233	129	323	108	240	104	1,137
Number of Catholics	214	117	265	66	220	84	966
Catholics %	78%	76%	82%	52%	92%	70%	78%
Number of non-Catholics	61	36	58	61	20	36	272
Non-Catholic %	22%	24%	18%	48%	8%	30%	22%
Number of minorities (non-white)	73	18	56	70	77	29	323
Minorities %	27%	12%	17%	55%	32%	24%	26%
Hispanic enrollment	50	32	21	50	13	15	181
Hispanic %	18%	21%	7%	39%	5%	13%	15%
Endowment Income	100,131	26,000	28,000	102,169	70,000	40,000	366,300
Amount of local scholarships	176,137	14,304	184,811	-	70,000	-	445,252
Tuition/fees	1,477,810	333,200	2,118,963	206,000	1,280,569	434,558	5,851,100
Tuition %	75%	44%	55%	26%	69%	51%	58%
Parish	137,400	78,000	262,000	60,680	405,000	165,000	1,108,080
Parish (indirect)	60,000	-	281,000	-	9,488	-	350,488
Parish % of budget	10%	10%	14%	8%	22%	19%	14%
Neighboring parish/es	38,518	7,000	25,539	60,680	-	6,000	137,737
Neighboring parish % of budget	2%	1%	1%	8%	-	1%	1%
Fundraising and Donations	192,247	231,640	1,072,281	227,000	14,000	121,450	1,858,618
Fundraising and Donations %	10%	30%	28%	28%	1%	14%	18%
Other	63,150	93,500	378,866	202,025	95,200	87,700	920,441
Other %	3%	12%	10%	25%	5%	10%	9%
Per pupil cost	7,160	4,858	12,813	5,956	7,948	6,789	8,348
Tuition-1 Catholic student	5,992	3,500	5,570	3,390	5,358	4,144	4,659
Tuition-1 out-of-parish student	7,190	4,075	7,000	4,610	8,352	5,948	6,196

2014 Data. Printed: 11/21/2014

South King/South Seattle Region

SCHOOLS LOCATION	Holy Fam. Seattle	Holy Fam. Auburn	Holy Ros. Seattle	OL Guad. Seattle	St. Anth. Renton	St. Bern. Seattle	St. Edw. Seattle	St. Fr. Assi. Seahurst	St. George Seattle	St. Joseph Seattle	St. Paul Seattle	St. Phil. D. Moines	St. Ther. Seattle	St. Vinc. Fed. Way	REGION TOTAL
Total enrollment	143	167	478	268	466	220	144	471	254	603	134	275	114	254	3,991
Pre-school enrollment	18	18	33	36	-	20	11	-	27	-	18	20	10	-	211
K-8 enrollment	125	149	445	232	466	200	133	471	227	603	116	255	104	254	3,780
Number of Catholics	132	161	468	267	448	208	75	376	179	444	89	224	39	204	3,314
Catholics %	92%	96%	98%	100%	96%	95%	52%	80%	70%	74%	66%	81%	34%	80%	83%
Number of non-Catholics	11	6	10	1	18	12	69	95	75	159	45	51	75	25	652
Non-Catholic %	8%	4%	2%	0%	4%	5%	48%	20%	30%	26%	34%	19%	66%	10%	16%
Number of minorities (non-white)	125	71	78	88	307	159	137	122	211	153	123	158	103	132	1,967
Minorities %	87%	43%	16%	33%	66%	72%	95%	26%	83%	25%	92%	57%	90%	52%	49%
Hispanic enrollment	70	6	20	21	47	41	5	33	12	22	2	35	3	22	339
Hispanic %	49%	4%	4%	8%	10%	19%	3%	7%	5%	4%	1%	13%	3%	9%	8%
Endowment Income	32,000	4,300	50,000	-	-	-	4,000	-	4,000	281,413	-	35,000	-	-	410,713
Amount of local scholarships	5,000	6,000	98,280	67,000	175,000	-	180,000	12,300	100,000	1,220,840	62,000	168,593	218,000	135,741	2,448,754
Tuition/fees	550,000	765,412	2,914,444	1,410,096	2,503,051	1,014,460	446,400	2,217,298	1,234,075	7,031,394	922,330	1,009,500	524,425	1,178,083	23,720,968
Tuition %	67%	76%	77%	78%	74%	82%	60%	83%	73%	75%	74%	69%	56%	82%	75%
Parish	100,000	110,000	201,283	140,833	205,500	55,000	105,000	139,290	-	223,650	97,524	145,000	95,004	138,634	1,756,718
Parish (indirect)	10,000	-	-	-	-	-	40,000	45,000	-	-	150,000	-	-	239,313	484,313
Parish % of budget	13%	11%	5%	8%	6%	4%	20%	7%	-	2%	20%	10%	10%	26%	7%
Neighboring parish/es	-	7,768	-	-	132,750	-	108,620	-	86,200	9,500	-	-	100,000	-	444,838
Neighboring parish % of budget	-	1%	-	-	4%	-	15%	-	5%	0%	-	-	11%	-	1%
Fundraising and Donations	61,000	130,000	568,000	257,000	403,750	161,150	60,000	247,500	365,170	1,259,650	113,000	159,092	120,000	112,075	4,017,387
Fundraising and Donations %	7%	13%	15%	14%	12%	13%	8%	9%	22%	13%	9%	11%	13%	8%	13%
Other	75,000	-	56,419	6,000	292,500	1,763	122,480	72,000	89,000	622,285	107,300	118,320	200,000	-	1,763,067
Other %	9%	-	1%	0%	9%	0%	17%	3%	5%	7%	9%	8%	21%	-	6%
Per pupil cost	9,950	6,067	7,825	6,768	7,591	5,602	6,128	5,777	6,986	15,168	10,374	5,207	9,118	7,284	8,247
Tuition-1 Catholic student	4,100	6,108	5,677	9,048	8,140	4,349	4,675	4,412	4,780	11,600	4,715	5,695	6,214	5,400	6,065
Tuition-1 out-of-parish student	-	7,126	8,206	9,048	8,140	6,560	5,300	6,853	6,250	11,600	6,250	6,461	7,646	7,400	7,449

Non-Parish Schools

SCHOOLS LOCATION	Eastside Cath. MS Sammamish	Forest Ridge 5-8 Bellevue	Holy Family Lacey	Pacific Crest Camas	Seattle Nativity Seattle	Villa Acad. Seattle	REGION TOTAL
Total enrollment	253	183	82	88	33	400	1,039
Pre-school enrollment	-	-	20	23	-	56	99
K-8 enrollment	253	183	62	65	33	344	940
Number of Catholics	120	51	82	76	10	169	508
Catholics %	47%	28%	100%	86%	30%	42%	49%
Number of non-Catholics	133	132	-	12	23	231	531
Non-Catholic %	53%	72%	-	14%	70%	58%	51%
Number of minorities (non-white)	60	77	30	27	33	73	300
Minorities %	24%	42%	37%	31%	100%	18%	29%
Hispanic enrollment	14	2	10	10	8	19	63
Hispanic %	6%	1%	12%	11%	24%	5%	6%
Endowment Income	-	460,400	-	-	-	-	460,400
Amount of local scholarships	-	434,899	-	-	348,600	670,176	1,453,675
Tuition/fees	5,311,735	5,744,250	358,850	454,981	250	6,779,482	18,649,548
Tuition %	91%	83%	60%	70%	0%	89%	82%
Parish	-	-	-	-	-	-	-
Parish (indirect)	-	-	-	-	-	-	-
Parish % of budget	-	-	-	-	-	-	-
Neighboring parish/es	-	-	11,000	52,293	-	-	63,293
Neighboring parish % of budget	-	-	2%	7%	-	-	0%
Fundraising and Donations	291,000	362,500	188,778	192,500	1,000,000	815,000	2,849,778
Fundraising and Donations %	5%	5%	31%	30%	100%	11%	13%
Other	231,000	336,340	53,443	-	-	54,401	675,184
Other %	4%	5%	9%	-	-	1%	3%
Per pupil cost	23,058	35,208	7,464	7,952	30,311	19,122	21,403
Tuition-1 Catholic student	20,495	28,800	5,920	5,800	-	17,645	15,732
Tuition-1 out-of-parish student	20,495	28,800	5,920	5,800	-	17,645	15,732

2014 Data. Printed: 11/21/2014

Secondary Schools

SCHOOLS	Arch. Mur.	Bellarmino	Blanchet	Eastside Cath.	Forest Ridge	Holy Names	Kennedy	O'Dea	Pope John	Seattle Prep	Seton High	REGION
LOCATION	Everett	Tacoma	Seattle	Sammamish	Bellevue	Seattle	Seattle	Seattle	Lacey	Seattle	Vancouver	TOTAL
Total enrollment	512	996	891	669	203	692	836	452	69	720	160	6,200
Pre-school enrollment	-	-	-	-	-	-	-	-	-	-	-	-
9-12 enrollment	512	996	891	669	203	692	836	452	69	720	160	6,200
Number of Catholics	210	653	733	388	66	502	559	320	57	524	125	4,137
Catholics %	41%	66%	82%	58%	33%	73%	67%	71%	83%	73%	78%	67%
Number of non-Catholics	302	343	158	281	137	190	277	132	12	196	35	2,063
Non-Catholic %	59%	34%	18%	42%	67%	27%	33%	29%	17%	27%	24%	33%
Number of minorities (non-white)	161	254	630	162	115	227	379	219	19	225	48	2,439
Minorities %	31%	26%	71%	24%	57%	33%	45%	48%	28%	31%	30%	39%
Hispanic enrollment	5	74	29	20	5	40	42	25	10	48	16	314
Hispanic %	1%	7%	3%	3%	2%	6%	5%	6%	14%	7%	10%	5%
Endowment Income	185,000	775,000	324,634	-	460,400	616,000	233,100	-	-	-	-	2,594,134
Amount of local scholarships	39,500	2,132,828	2,345,326	-	1,121,648	1,227,880	1,160,860	112,000	-	1,400,000	295,000	9,835,042
Tuition/fees	5,995,000	13,825,340	12,337,130	13,629,175	6,570,900	8,882,536	10,465,350	4,974,284	550,200	12,348,400	1,846,433	91,424,748
Tuition %	82%	82%	85%	94%	85%	81%	89%	90%	44%	100%	66%	87%
Parish	-	-	-	-	-	-	-	-	-	-	-	-
Parish (indirect)	-	-	-	-	-	-	-	-	-	-	-	-
Parish % of budget	-	-	-	-	-	-	-	-	-	-	-	-
Neighboring parish/es	9,000	-	-	-	-	-	-	-	-	-	2,780	11,780
Neighboring parish % of budget	0%	-	-	-	-	-	-	-	-	-	0%	0%
Fundraising and Donations	963,250	1,609,250	1,247,249	475,000	362,500	1,271,898	620,000	449,500	687,360	-	850,000	8,536,007
Fundraising and Donations %	13%	10%	9%	3%	5%	12%	5%	8%	55%	-	30%	8%
Other	181,000	712,152	637,889	352,000	336,340	155,000	474,435	118,430	6,450	-	92,526	3,066,222
Other %	2%	4%	4%	2%	4%	1%	4%	2%	1%	-	3%	3%
Per pupil cost	13,961	16,212	15,962	21,609	35,812	14,898	13,827	12,262	18,029	17,151	19,387	16,662
Tuition-1 Catholic student	13,155	13,220	11,680	20,495	28,800	14,196	10,950	11,594	11,524	16,800	11,404	14,893
Tuition-1 out-of-parish student	13,155	13,220	13,381	20,495	28,800	14,196	11,675	12,386	11,524	16,800	11,404	15,185

2014 Data. Printed: 11/21/2014

Archdiocese Totals

SCHOOLS	ELEMENTARY SCHOOLS	SECONDARY SCHOOLS	GRAND
LOCATION	TOTAL	TOTAL	TOTAL
Total enrollment	15,939	6,200	22,139
<i>Pre-school enrollment</i>	1,398	-	1,398
K-12 enrollment	14,541	6,200	20,741
Number of Catholics	12,821	4,238	17,059
Percentage of Catholics	80%	68%	77%
Number of non-Catholics	3,093	1,962	5,055
Percentage of non-Catholics	19%	32%	23%
Number of minorities (non-white)	5,642	2,441	8,083
Percentage of minorities	35%	39%	37%
Hispanic Enrollment	1,422	350	1,772
Percentage of Hispanic	9%	6%	8%
Endowment Income	2,547,917	2,594,134	5,142,051
Amount of local scholarships	7,259,535	9,835,042	17,094,577
Tuition/fees	100,922,250	91,424,748	192,346,998
Tuition %	75%	89%	80%
Parish	8,312,737	-	8,312,737
Parish (indirect)	1,456,984	-	1,456,984
Parish % of budget	7%	-	4%
Neighboring parish/es	1,050,691	11,780	1,062,471
Neighboring parish % of budget	1%	0%	0%
Fundraising and Donations	17,223,541	8,536,007	25,759,548
Fundraising and Donations %	13%	8%	11%
Other	5,734,113	3,066,222	8,800,335
Other %	4%	3%	4%
On Average			
Per pupil cost	8,470	16,662	---
Tuition-1 Catholic student (K-12)	6,518	14,893	---
Tuition-1 out-of-parish student (K-12)	8,129	15,185	---

Quick Data Reference by School Name 2014-2015

SCHOOL NAME	Enrollment	Faculty	Tuition Cath.	Tuition Out-of-Parish	Total Revenue
All Saints School, Puyallup	345	41	5,124	-	2,553,478
Archbishop Murphy High School, Everett	512	41	13,155	13,155	7,324,250
Assumption School, Bellingham	194	17	5,220	6,780	1,405,915
Assumption-St. Bridget School, Seattle	502	32	6,072	9,432	4,298,548
Bellarmino Preparatory School, Tacoma	996	89	13,220	13,220	16,921,742
Bishop Blanchet High School, Seattle	891	81	11,680	13,381	14,546,902
Christ the King School, Seattle	204	21	5,834	8,324	1,738,867
Eastside Catholic High School, Sammamish	669	63	20,495	20,495	14,456,175
Eastside Catholic Middle School, Sammamish	253	24	20,495	20,495	5,833,735
Forest Ridge 5-8 School, Bellevue	183	36	28,800	28,800	6,903,490
Forest Ridge High School, Bellevue	203	41	28,800	28,800	7,730,140
Holy Family School, Auburn	167	13	6,108	7,126	1,009,712
Holy Family School, Kirkland	248	32	6,672	10,332	2,315,200
Holy Family School, Lacey	82	15	5,920	5,920	601,071
Holy Family Bilingual Catholic Academy, Seattle	143	15	4,100	-	818,000
Holy Names Academy, Seattle	692	51	14,196	14,196	10,925,434
Holy Rosary School, Edmonds	256	18	5,780	9,508	1,743,551
Holy Rosary School, Seattle	478	31	5,677	8,206	3,790,146
HRRS/Juan Diego Academy, Tacoma	168	20	5,250	5,250	1,002,100
Immaculate Conception Regional School, Mt. Vernon	234	16	4,150	5,955	1,315,812
Immaculate Conception/OLPH School, Everett	250	28	5,178	7,550	1,428,122
Kennedy Catholic High School, Seattle	836	70	10,950	11,675	11,792,885
O'Dea High School, Seattle	452	37	11,594	12,386	5,542,214
Our Lady of Fatima School, Seattle	246	20	6,383	9,428	2,121,295
Our Lady of Guadalupe School, Seattle	268	25	9,048	9,048	1,813,929
Our Lady of Lourdes School, Vancouver	275	19	5,992	7,190	1,970,738
Our Lady of the Lake School, Seattle	295	20	6,220	8,610	2,294,000
Our Lady Star of the Sea School, Bremerton	193	14	4,452	5,508	1,087,812
Pacific Crest Academy, Camas	88	18	5,800	5,800	647,481
Pope John Paul II High School, Lacey	69	11	11,524	11,524	1,244,010
Queen of Angels School, Port Angeles	137	17	3,620	4,895	1,092,339
Sacred Heart School, Bellevue	409	52	10,835	10,835	4,187,574
Seattle Nativity, Seattle	33	10	0	0	1,000,250
Seattle Preparatory School, Seattle	720	70	16,800	16,800	12,348,400
Seton Catholic High School, Vancouver	160	22	11,404	11,404	2,788,959
St. Alphonsus School, Seattle	229	18	5,810	8,300	1,352,658
St. Anne School, Seattle	260	26	7,050	8,900	2,124,000
St. Anthony School, Renton	466	26	8,140	8,140	3,404,801
St. Benedict School, Seattle	213	29	5,640	7,470	1,710,154
St. Bernadette School, Seattle	220	21	4,349	6,560	1,232,373
St. Brendan School, Bothell	248	31	5,222	8,176	1,598,240
St. Catherine School, Seattle	226	26	5,698	8,195	1,716,886
St. Cecilia School, Bainbridge Is.	104	16	5,825	6,280	747,076
St. Charles Borromeo School, Tacoma	521	32	5,673	6,776	3,222,598
St. Edward School, Seattle	144	13	4,675	5,300	737,880
St. Frances Cabrini School, Tacoma	216	17	4,853	4,853	1,378,161
St. Francis of Assisi School, Seahurst	471	29	4,412	6,853	2,676,088
St. George School, Seattle	254	12	4,780	6,250	1,692,245
St. John School, Seattle	541	34	6,357	8,475	3,905,138
St. Joseph School, Chehalis	153	13	3,500	4,075	762,340
St. Joseph School, Issaquah	329	30	6,944	8,523	2,638,624
St. Joseph School, Seattle	603	70	11,600	11,600	9,418,392
St. Joseph School, Vancouver	323	22	5,570	7,000	3,860,110
St. Louise School, Bellevue	441	40	5,616	9,063	3,216,118
St. Luke School, Shoreline	321	25	5,730	8,840	1,944,390
St. Madeleine Sophie School, Bellevue	194	20	7,990	8,990	2,043,600
St. Mark School, Shoreline	157	14	5,000	6,400	771,000
St. Mary Magdalen School, Everett	398	38	6,050	7,600	2,459,470
St. Mary School, Aberdeen	127	11	3,390	4,610	797,870
St. Matthew School, Seattle	193	21	5,198	7,056	1,296,945
St. Michael School, Olympia	240	18	5,358	8,352	1,864,769
St. Michael School, Snohomish	103	8	4,987	4,987	409,300
St. Monica School, Mercer Island	201	31	6,747	10,350	1,794,224
St. Nicholas School, Gig Harbor	169	22	4,700	6,500	1,043,870
St. Patrick School, Tacoma	380	30	5,625	7,225	2,280,205
St. Paul School, Seattle	134	13	4,715	6,250	1,240,154
St. Philomena School, Des Moines	275	18	5,695	6,461	1,466,912
St. Pius X School, Mountlake Terrace	148	13	4,850	7,250	757,325
St. Rose School, Longview	120	13	4,144	5,948	848,708
St. Therese Catholic Academy, Seattle	114	19	6,214	7,646	939,429
St. Thomas More School, Lynnwood	267	21	5,250	6,760	1,736,510
St. Vincent de Paul, Federal Way	229	16	5,400	7,400	1,428,792
Villa Academy, Seattle	400	78	17,645	17,645	7,648,883
Visitation Catholic STEM Academy, Tacoma	131	20	4,965	5,665	807,047

2014-2015 Glossary of Definitions for NCEA and OCS Data Collection

SCHOOLS:

Elementary/Middle: generally Pre-K-8, K-8, 5-8. **Pre-K** is included if they are part of the school and not a separate parish daycare program.
Secondary: 9-12.

LOCATION:

Urban: within the limits of a major city or one with at least 50,000 population.
Inner-city: located within a major city and characterized by a concentration (>40%) of low income inhabitants.
Suburban: outside of, but tangent to, a major city or its immediate suburbs.
Rural: located outside of an urban or suburban area and having fewer than 50,000 inhabitants.

RACE:

Students are counted in the category of which they are most characteristic.
Asian: identifies as having origins in Far East, Southeast Asia or Indian Sub-continent: (Cambodia, China, India, Japan, Korea, Malaysia, Pakistan, Philippines, Thailand, Vietnam, etc.)
American Indian/Native Alaskan: identifies as one of the two classifications of Native Americans.
Black/African American: identifies as black whether from US, Africa or other parts of the world.
Native Hawaiian/Other Pacific Islander: includes native Hawaiians living anywhere in the US (but not non-Hawaiian residents of Hawaii) also includes other Pacific Islands: Guam, Samoa, Fiji, Micronesia, and Polynesia.
White: Caucasian from any part of the world (**including Middle East**) and does not identify as one of the other groups.
Multi-racial: person belongs to more than one racial group.

ETHNICITY:

Hispanic is now reported as a separate ethnic category. All students are counted as either Hispanic or Non-Hispanic.

PROFESSIONAL STAFF:

Includes all paid professionals: faculty, administrators, counselors, etc. who have responsibility for the teaching and learning process. Does not include development, admissions directors, or volunteers, etc.
Full time: paid employees who regularly work a full day or 100% of contract. Full time employees may have one position or divide their time between more than one position (teaching/administration, etc.) but work the full schedule.
Part-time: paid employees who work less than the full school day/week or 100% of contract.

BUDGET:

Parish Direct Subsidy: The parish contribution to the school from its ordinary income (Sunday and Holy Day Collection). This does not include shared expenses with the school such as positions or utilities.
Parish Indirect Subsidy: includes shared cost items that are not booked directly to school operations. Not to be included in the revenue portion of the budget.
Parish % of School Budget: is the % the School Budget represented by Parish Subsidy.
Neighboring Parishes Subsidy: the annual amount of subsidy from other parishes with students who attend the school.
Fundraising and Donations: is the revenue from fundraising and donations including legacy gifts.
Development: is revenue from donations, such as annual appeal.
Other: is interest, rentals, and all the other revenue sources for a school.
Per Pupil Cost: is the actual cost of educating a student, including all actual costs as well as some provision for future building and capital needs. (Total Budget/Total Enrollment)

